



▶ **TRUSTEE AREA
PROCESS**

SAN SIMEON COMMUNITY
SERVICE DISTRICT

APRIL 12, 2022 Corrected

▶ TRUSTEE AREA PROCESS

DATE	ACTIVITY
January 31, 2022	Board Meeting: First Pre-Map Public Hearing and Presentation
February 8, 2022	Board Meeting: Second Pre-Map Public Hearing and Presentation
February-March 2022	Preparation of draft trustee area scenarios
March 8, 2022	Board Meeting: Public Hearing and Informative Discussion Item on Trustee Area Scenarios
April 12, 2022	Board Meeting: Public Hearing on Trustee Area Scenarios
May 10, 2022	Board Meeting: Public Hearing on Trustee Area Scenarios Board Selection of Voting Area Map
May 2022	Cooperative Strategies sends Final Voting Area Map to the County Registrar of Voters
November 8, 2022	First Election Held Utilizing Trustee Areas

▶ CONSIDERATIONS IN TRUSTEE AREAS



Each area shall contain nearly equal number of inhabitants



Follow man-made and natural geographic features, as much as possible



Drawn to comply with the Federal Voting Rights Act



Respect incumbency, if possible



Compact and contiguous, as much as possible



Other local considerations (i.e., school boundaries, locations of school sites)



Respect communities of interest, as much as possible

► **DISTRICT DEMOGRAPHICS**
2010 and 2020 CENSUS DATA COMPARISON

2010 to 2020 Census Comparison (Trustee Area Creation)

Population	2010 Census		2020 Census		Change	
	Total	Percent	Total	Percent	Population	Percent
Hispanic/Latino	249	55.3%	296	66.5%	47	18.9%
White	181	40.2%	125	28.1%	-56	-30.9%
Black/ African American	1	0.2%	0	0.0%	-1	-100.0%
American Indian/Alaska Native	5	1.1%	2	0.4%	-3	-60.0%
Asian	6	1.3%	10	2.2%	4	66.7%
Native Hawaiian/ Pacific Islander	0	0.0%	0	0.0%	0	0.0%
Other	0	0.0%	0	0.0%	0	0.0%
Two or More Races	8	1.8%	12	2.7%	4	50.0%
Total Population	450	100%	445	100%	-5	-1.1%

**Source: Statewide 2021 Redistricting Database (Sept 27 file) (Census 2020)*

► DISTRICT DEMOGRAPHICS
2020 CENSUS DATA



Population	Total Population		Age 18 and over	
	Total	%	Total	%
Hispanic/Latino	296	66.5%	197	58.1%
White	125	28.1%	119	35.1%
Black / African American	0	0.0%	0	0.0%
American Indian /Alaska Native	2	0.4%	2	0.6%
Asian	10	2.2%	10	2.9%
Hawaiian/ Pacific Islander	0	0.0%	0	0.0%
Two or More Races	0	0.0%	0	0.0%
Other	12	2.7%	11	3.2%
Total	445	100%	339	100%

*Source: Statewide 2021 Redistricting Database (Sept 27 file) (Census 2020)

► DISTRICT DEMOGRAPHICS
CITIZEN VOTING AGE POPULATION ESTIMATES



Population	2015-2019 CVAP	
	Total	%
Hispanic/Latino	103	46.8%
White	97	44.1%
Black / African American	0	0.0%
American Indian / Alaska Native	0	0.0%
Asian	20	9.1%
Hawaiian/ Pacific Islander	0	0.0%
Two or More Races	0	0.0%
Total	220	100%

*Source: American Community Survey, 2015-2019 Data

▶ CONCEPTUAL VOTING AREAS
SCENARIO 1



► DEMOGRAPHICS SCENARIO 1

Total Population: 445 Ideal Director Area Size: 89 Total Variance: 7.9%

DIRECTOR AREA	Director Area A		Director Area B		Director Area C		Director Area D		Director Area TBD	
	TP*	CVAP**	TP	CVAP	TP	CVAP	TP	CVAP	TP	CVAP
Population	88	45	87	55	94	34	88	37	88	49
Population Variance	-1.1%	N/A	-2.2%	N/A	5.6%	N/A	-1.1%	N/A	-1.1%	N/A
Hispanic/Latino	64.8%	37.8%	42.5%	25.5%	85.1%	64.7%	75.0%	64.9%	68.2%	49.0%
White	27.3%	40.0%	55.2%	70.9%	9.6%	26.5%	22.7%	35.1%	26.1%	38.8%
Black/African American	0.0%	0.0%	0.0%	0.0%	0.0%	0.0%	0.0%	0.0%	0.0%	0.0%
American Indian/Alaska Native	0.0%	0.0%	0.0%	0.0%	1.1%	0.0%	0.0%	0.0%	0.0%	0.0%
Asian	4.5%	22.2%	1.1%	3.6%	1.1%	8.6%	0.0%	0.0%	3.4%	12.2%
Native Hawaiian/Other Pacific Islander	0.0%	0.0%	0.0%	0.0%	0.0%	0.0%	0.0%	0.0%	0.0%	0.0%
Other	0.0%	0.0%	0.0%	0.0%	0.0%	0.0%	0.0%	0.0%	0.0%	0.0%
Two or More Races	3.4%	0.0%	1.1%	0.0%	3.2%	0.0%	2.3%	0.0%	2.3%	0.0%

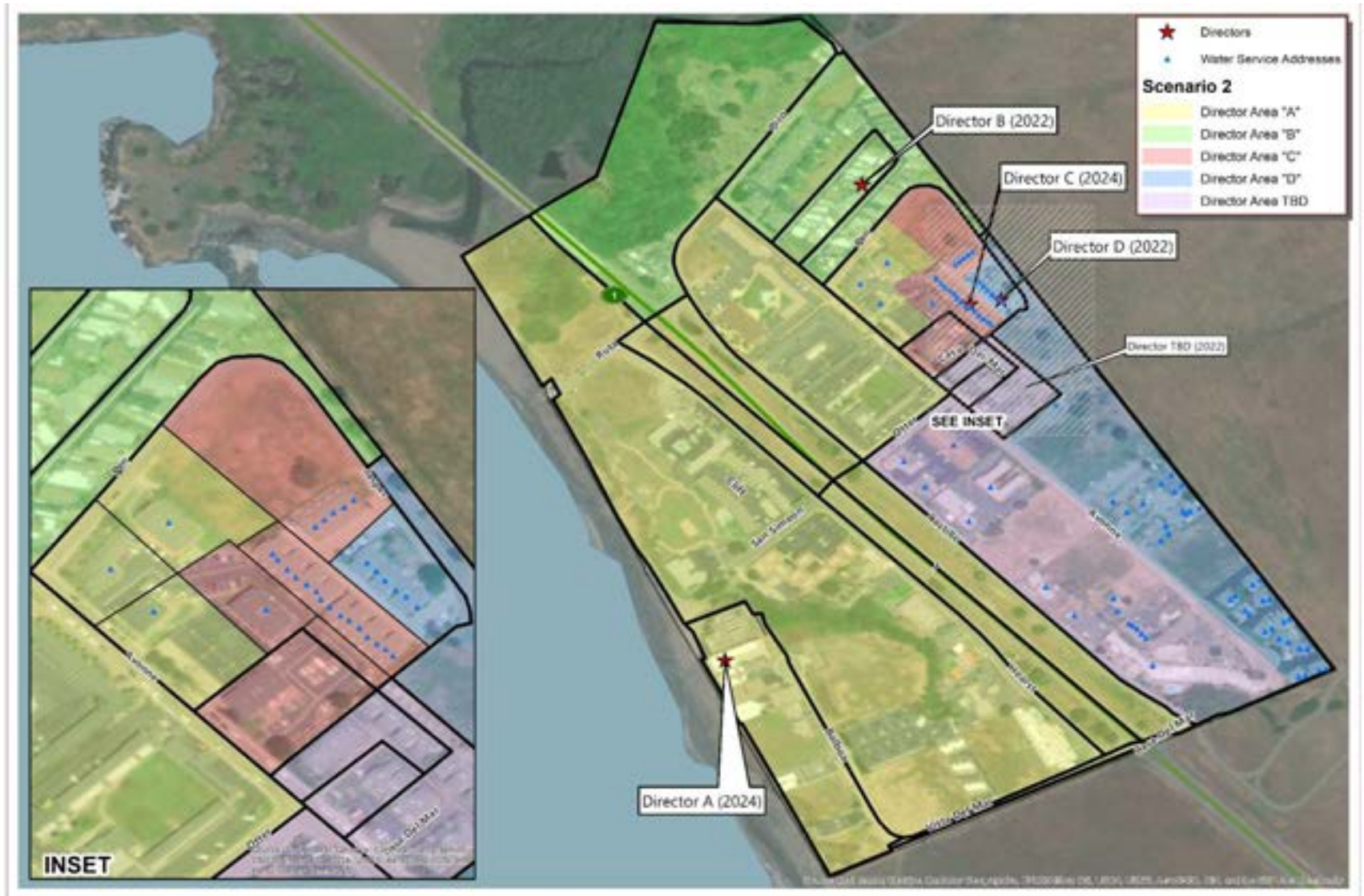
*Total Population; Source: Redistricting Database for California, Published by Statewide Database on September 27, 2021

**Citizen Voting Age Population (CVAP); Source: American Community Survey, 2015-2019 Data

► CONCEPTUAL VOTING AREAS
SCENARIO 2



► CONCEPTUAL VOTING AREAS
SCENARIO 2



► DEMOGRAPHICS SCENARIO 2

Total Population: 445 Ideal Director Area Size: 89 Total Variance: 9.0%

DIRECTOR AREA	Director Area A		Director Area B		Director Area C		Director Area D		Director Area TBD	
TP* vs. CVAP**	TP	CVAP	TP	CVAP	TP	CVAP	TP	CVAP	TP	CVAP
Population	95	47	87	55	87	32	88	37	88	49
Population Variance	6.7%	N/A	-2.2%	N/A	-2.2%	N/A	-1.1%	N/A	-1.1%	N/A
Hispanic/Latino	66.3%	36.2%	42.5%	25.5%	85.1%	68.8%	75.0%	64.9%	68.2%	49.0%
White	26.3%	40.4%	55.2%	70.9%	9.2%	25.0%	22.7%	35.1%	26.1%	38.8%
Black/African American	0.0%	0.0%	0.0%	0.0%	0.0%	0.0%	0.0%	0.0%	0.0%	0.0%
American Indian/Alaska Native	0.0%	0.0%	0.0%	0.0%	1.1%	0.0%	0.0%	0.0%	0.0%	0.0%
Asian	4.2%	23.4%	1.1%	3.6%	1.1%	6.3%	0.0%	0.0%	3.4%	12.2%
Native Hawaiian/Other Pacific Islander	0.0%	0.0%	0.0%	0.0%	0.0%	0.0%	0.0%	0.0%	0.0%	0.0%
Other	0.0%	0.0%	0.0%	0.0%	0.0%	0.0%	0.0%	0.0%	0.0%	0.0%
Two or More Races	3.2%	0.0%	1.1%	0.0%	3.4%	0.0%	2.3%	0.0%	2.3%	0.0%

*Total Population; Source: Redistricting Database for California, Published by Statewide Database on September 27, 2021

**Citizen Voting Age Population (CVAP); Source: American Community Survey, 2015-2019 Data

▶ CONCEPTUAL VOTING AREAS
SCENARIO 3



▶ CONCEPTUAL VOTING AREAS
SCENARIO 3



► DEMOGRAPHICS SCENARIO 3

Total Population: 445 Ideal Director Area Size: 89 Total Variance: 5.6%

DIRECTOR AREA	Director Area A		Director Area B		Director Area C		Director Area D		Director Area TBD	
TP* vs. CVAP**	TP	CVAP	TP	CVAP	TP	CVAP	TP	CVAP	TP	CVAP
Population	87	51	87	55	87	32	92	37	92	45
Population Variance	-2.2%	N/A	-2.2%	N/A	-2.2%	N/A	3.4%	N/A	3.4%	N/A
Hispanic/Latino	55.2%	37.3%	42.5%	25.5%	87.4%	65.6%	82.6%	67.6%	68.5%	48.9%
White	35.6%	47.1%	55.2%	70.9%	9.2%	25.0%	16.3%	29.7%	23.9%	35.6%
Black/African American	0.0%	0.0%	0.0%	0.0%	0.0%	0.0%	0.0%	0.0%	0.0%	0.0%
American Indian/Alaska Native	0.0%	0.0%	0.0%	0.0%	1.1%	0.0%	0.0%	0.0%	0.0%	0.0%
Asian	4.6%	15.7%	1.1%	3.6%	1.1%	9.4%	0.0%	2.7%	3.3%	15.6%
Native Hawaiian/Other Pacific Islander	0.0%	0.0%	0.0%	0.0%	0.0%	0.0%	0.0%	0.0%	0.0%	0.0%
Other	0.0%	0.0%	0.0%	0.0%	0.0%	0.0%	0.0%	0.0%	0.0%	0.0%
Two or More Races	4.6%	0.0%	1.1%	0.0%	1.1%	0.0%	1.1%	0.0%	4.3%	0.0%

*Total Population; Source: Redistricting Database for California, Published by Statewide Database on September 27, 2021

**Citizen Voting Age Population (CVAP); Source: American Community Survey, 2015-2019 Data



QUESTIONS