

AGENDA
SAN SIMEON COMMUNITY SERVICES DISTRICT
BOARD OF DIRECTORS SPECIAL BOARD MEETING
Friday, April 22, 2022
2:00 pm

Pursuant to San Simeon CSD Resolution 22-444 and in compliance with AB 361 this meeting shall occur as a virtual teleconference using the Zoom app.

Internet Meeting Location – Via ZOOM

Join Zoom for Special Meeting Board Session:

<https://us02web.zoom.us/j/87307810050>

Or One tap mobile:

US: +16699009128, 87307810050#

Or Telephone:

Dial (for higher quality, dial a number based on your current location):

US: +1 669 900 9128

The following commands can be entered via DTMF tones using your **phone's** dial pad while in a **Zoom meeting**: *6 - Toggle mute/unmute. *9 - **Raise hand**.

Webinar ID: 873 0781 0050

NOTE: On the day of the meeting, the virtual meeting room will be open 30 minutes prior to the meeting start time. If you wish to submit public comment in the written format you can email Cortney Murguia at admin@sansimeoncsd.org. Members of the public can also contact the District office at (805) 927-4778 or (805) 400-7399 with any questions or concerns related to this agenda or accessing the meeting.

- 1. OPEN SESSION: 2:00 PM -**
 - A. Roll Call

2. PUBLIC HEARING:

Public Comment – Public comment will be allowed for each individual public hearing item. Members of the public wishing to speak on public hearing items may do so when recognized by the Presiding Officer. If a member of the public wishes to speak at this time, Public Comment is limited to three (3) minutes per person for each public hearing item.

A. PUBLIC HEARING TO RECEIVE PUBLIC INPUT AND FOR BOARD SELECTION AND APPROVAL OF FINAL MAP FOR A DIVISION BASED ELECTION SYSTEM AND ELECTION SEQUENCING

B. PUBLIC HEARING FOR ADOPTION OF A RESOLUTION ESTABLISHING VOTING DIVISIONS FOR ELECTIONS AND DEFINING DIVISION BOUNDARIES FOR THE FIVE BOARD OF DIRECTORS DIVISIONS.

3. ADJOURNMENT –

All staff reports or other written documentation, including any supplemental material distributed to a majority of the Board within 24 hours of a special meeting, relating to each item of business on the agenda are available for public inspection during regular business hours in the District office, 111 Pico Avenue, San Simeon. If requested, this agenda shall be made available in appropriate alternative formats to persons with a disability, as required by the Americans with Disabilities Act. To make a request for a disability-related modification or accommodation, contact the District Administrator at 805-927-4778 as soon as possible and at least 48 hours prior to the meeting date. This agenda was prepared and posted pursuant to Government Code Section 54954.2.



PUBLIC HEARING ITEM STAFF REPORT

ITEM 2.A. CONSIDERATION OF INPUT FROM THE COMMUNITY REGARDING THE VOTING AREAS SCENARIOS FOR A DISTRICT BASED ELECTION SYSTEM.

Summary:

The purpose of this hearing will be for the Board to formally adopt one of the three voting scenarios. This is the final Public Hearing.

Recommendation:

It is recommended that the Board take the following actions:

- 1) Receive a report on the potential mapping areas from David Lopez.
- 2) Conduct a public hearing to receive public input.
- 3) Approve one of the three mapping scenarios.

Enc: Cooperative Strategies Presentation –
Scenario 1
Scenario 2
Scenario 3



▶ **TRUSTEE AREA
PROCESS**

SAN SIMEON COMMUNITY
SERVICE DISTRICT

APRIL 22, 2022



**COOPERATIVE
STRATEGIES**
ASSESS • PLAN • FUND • BUILD

▶ TRUSTEE AREA PROCESS

DATE	ACTIVITY
January 31, 2022	Board Meeting: First Pre-Map Public Hearing and Presentation
February 8, 2022	Board Meeting: Second Pre-Map Public Hearing and Presentation
February-March 2022	Preparation of draft trustee area scenarios
March 8, 2022	Board Meeting: Public Hearing and Informative Discussion Item on Trustee Area Scenarios
April 12, 2022	Board Meeting: Public Hearing on Trustee Area Scenarios
April 22, 2022	Board Meeting: Public Hearing on Trustee Area Scenarios Board Selection of Voting Area Map
April/May 2022	Cooperative Strategies sends Final Voting Area Map to the County Registrar of Voters
November 8, 2022	First Election Held Utilizing Trustee Areas

▶ CONSIDERATIONS IN TRUSTEE AREAS



Each area shall contain nearly equal number of inhabitants



Follow man-made and natural geographic features, as much as possible



Drawn to comply with the Federal Voting Rights Act



Respect incumbency, if possible



Compact and contiguous, as much as possible



Other local considerations (i.e., school boundaries, locations of school sites)



Respect communities of interest, as much as possible

► **DISTRICT DEMOGRAPHICS**
2010 and 2020 CENSUS DATA COMPARISON

2010 to 2020 Census Comparison (Trustee Area Creation)

Population	2010 Census		2020 Census		Change	
	Total	Percent	Total	Percent	Population	Percent
Hispanic/Latino	249	55.3%	296	66.5%	47	18.9%
White	181	40.2%	125	28.1%	-56	-30.9%
Black/ African American	1	0.2%	0	0.0%	-1	-100.0%
American Indian/Alaska Native	5	1.1%	2	0.4%	-3	-60.0%
Asian	6	1.3%	10	2.2%	4	66.7%
Native Hawaiian/ Pacific Islander	0	0.0%	0	0.0%	0	0.0%
Other	0	0.0%	0	0.0%	0	0.0%
Two or More Races	8	1.8%	12	2.7%	4	50.0%
Total Population	450	100%	445	100%	-5	-1.1%

**Source: Statewide 2021 Redistricting Database (Sept 27 file) (Census 2020)*

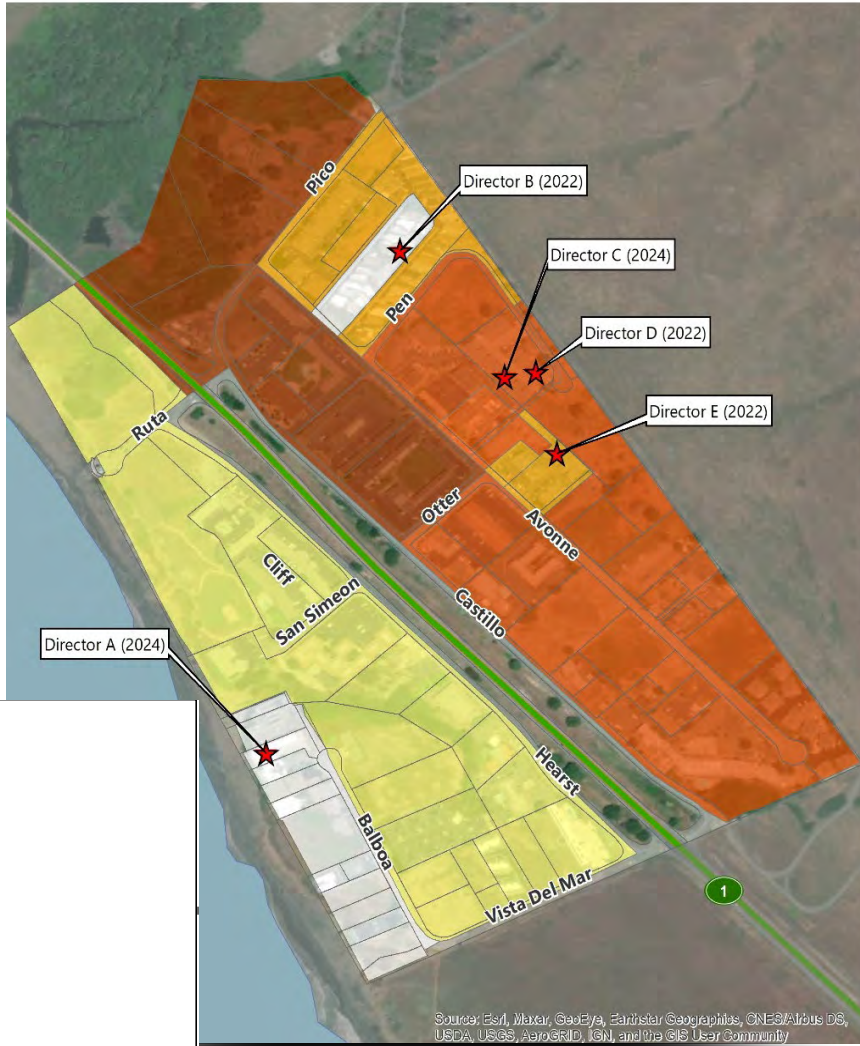
► DISTRICT DEMOGRAPHICS 2020 CENSUS DATA



Population	Total Population		Age 18 and over	
	Total	%	Total	%
Hispanic/Latino	296	66.5%	197	58.1%
White	125	28.1%	119	35.1%
Black / African American	0	0.0%	0	0.0%
American Indian /Alaska Native	2	0.4%	2	0.6%
Asian	10	2.2%	10	2.9%
Hawaiian/ Pacific Islander	0	0.0%	0	0.0%
Two or More Races	0	0.0%	0	0.0%
Other	12	2.7%	11	3.2%
Total	445	100%	339	100%

*Source: Statewide 2021 Redistricting Database (Sept 27 file) (Census 2020)

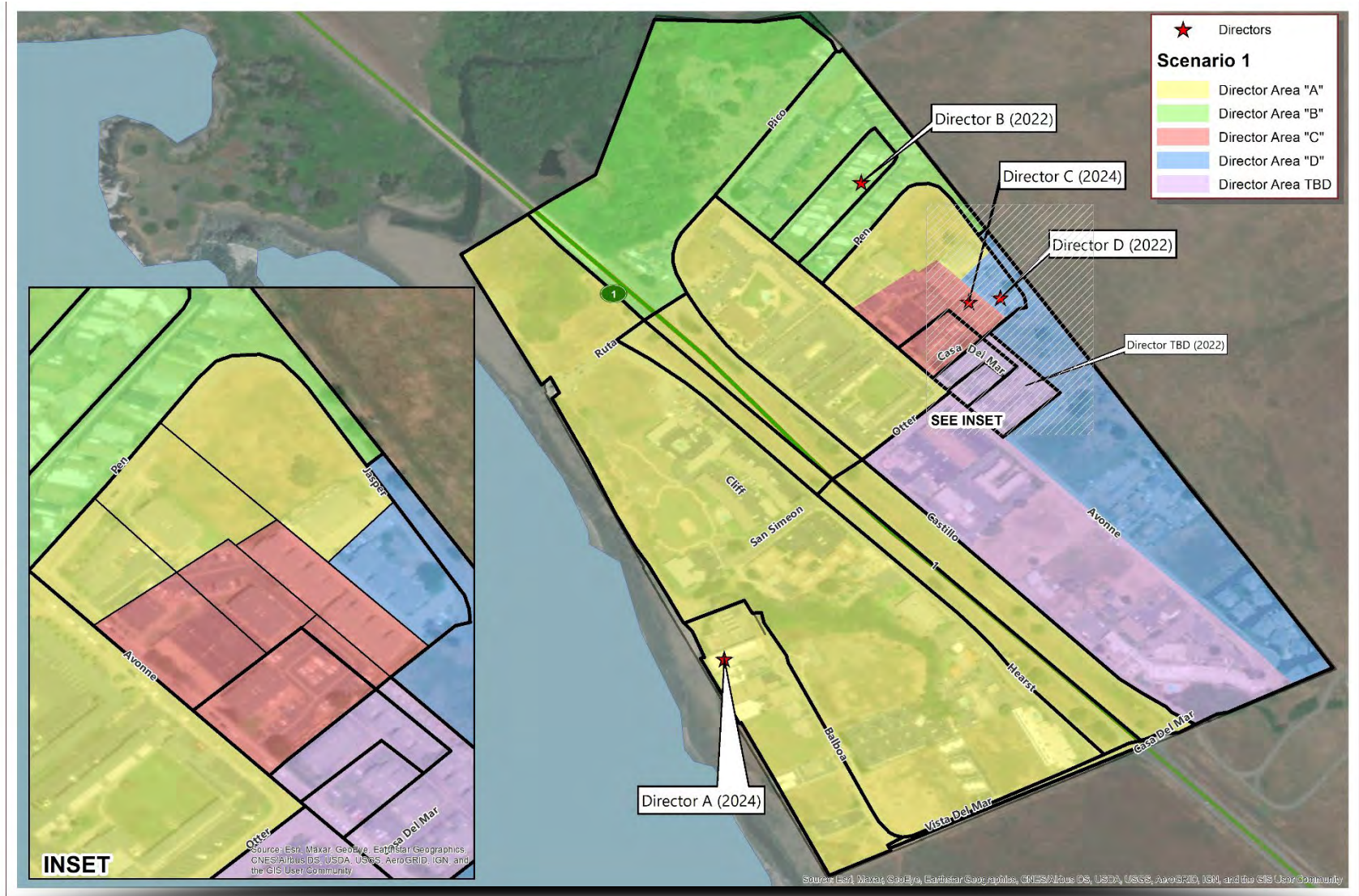
► DISTRICT DEMOGRAPHICS
CITIZEN VOTING AGE POPULATION ESTIMATES



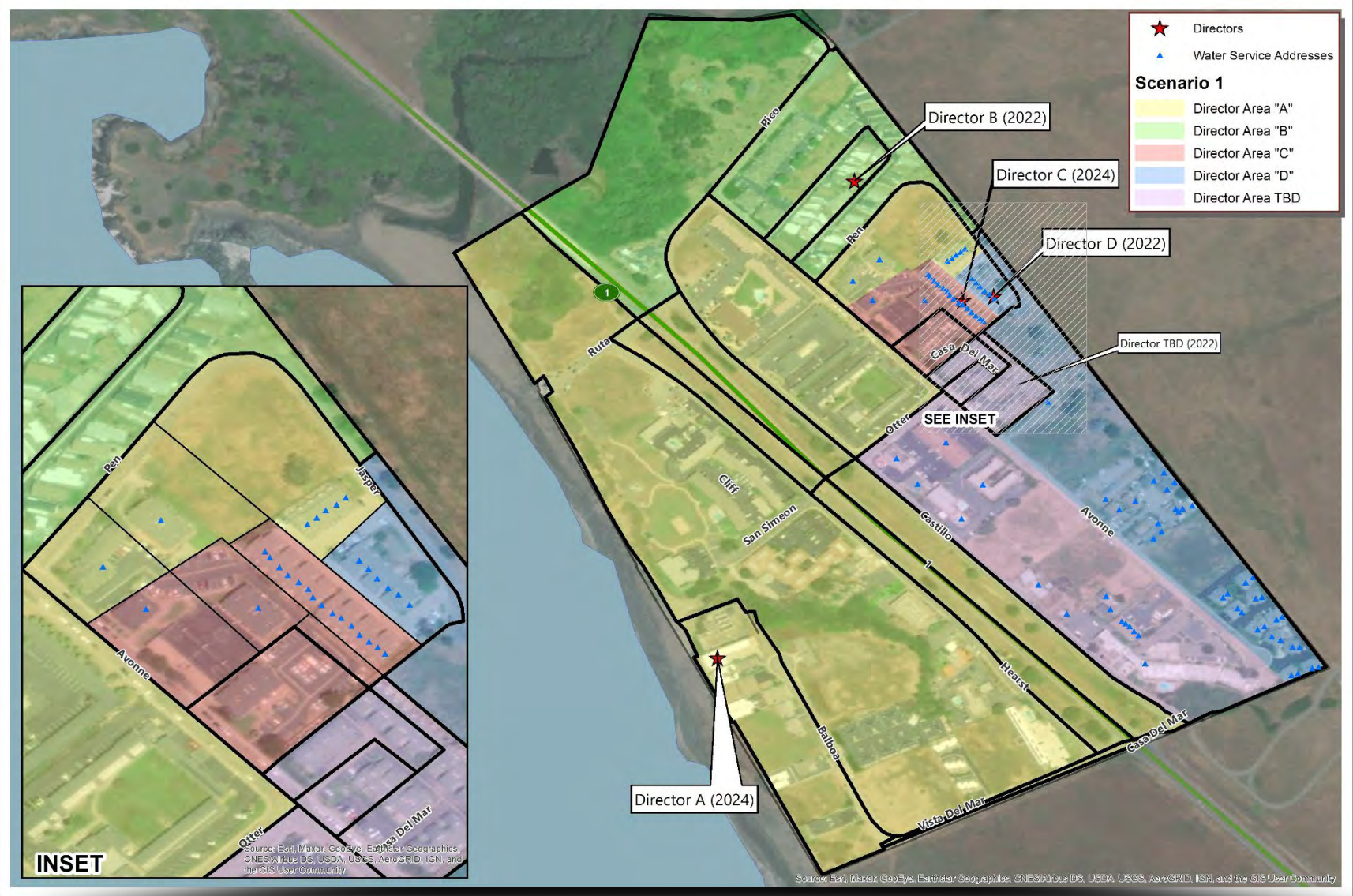
Population	2015-2019 CVAP	
	Total	%
Hispanic/Latino	103	46.8%
White	97	44.1%
Black / African American	0	0.0%
American Indian / Alaska Native	0	0.0%
Asian	20	9.1%
Hawaiian/ Pacific Islander	0	0.0%
Two or More Races	0	0.0%
Total	220	100%

*Source: American Community Survey, 2015-2019 Data

▶ CONCEPTUAL VOTING AREAS SCENARIO 1



▶ CONCEPTUAL VOTING AREAS SCENARIO 1



► DEMOGRAPHICS SCENARIO 1

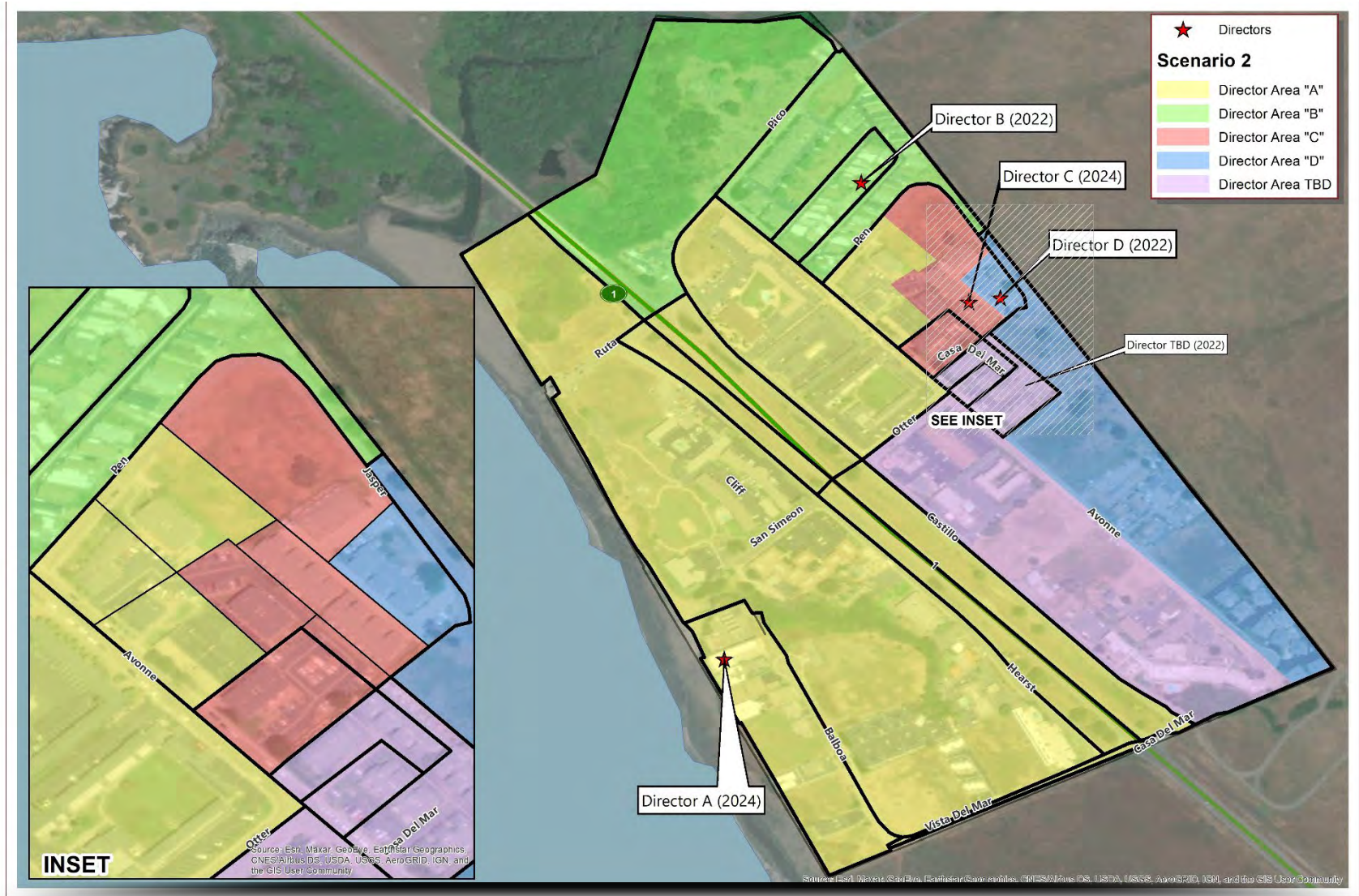
Total Population: 445 Ideal Director Area Size: 89 Total Variance: 7.9%

DIRECTOR AREA	Director Area A		Director Area B		Director Area C		Director Area D		Director Area TBD	
	TP*	CVAP**	TP	CVAP	TP	CVAP	TP	CVAP	TP	CVAP
Population	88	45	87	55	94	34	88	37	88	49
Population Variance	-1.1%	N/A	-2.2%	N/A	5.6%	N/A	-1.1%	N/A	-1.1%	N/A
Hispanic/Latino	64.8%	37.8%	42.5%	25.5%	85.1%	64.7%	75.0%	64.9%	68.2%	49.0%
White	27.3%	40.0%	55.2%	70.9%	9.6%	26.5%	22.7%	35.1%	26.1%	38.8%
Black/African American	0.0%	0.0%	0.0%	0.0%	0.0%	0.0%	0.0%	0.0%	0.0%	0.0%
American Indian/Alaska Native	0.0%	0.0%	0.0%	0.0%	1.1%	0.0%	0.0%	0.0%	0.0%	0.0%
Asian	4.5%	22.2%	1.1%	3.6%	1.1%	8.6%	0.0%	0.0%	3.4%	12.2%
Native Hawaiian/Other Pacific Islander	0.0%	0.0%	0.0%	0.0%	0.0%	0.0%	0.0%	0.0%	0.0%	0.0%
Other	0.0%	0.0%	0.0%	0.0%	0.0%	0.0%	0.0%	0.0%	0.0%	0.0%
Two or More Races	3.4%	0.0%	1.1%	0.0%	3.2%	0.0%	2.3%	0.0%	2.3%	0.0%

*Total Population; Source: Redistricting Database for California, Published by Statewide Database on September 27, 2021

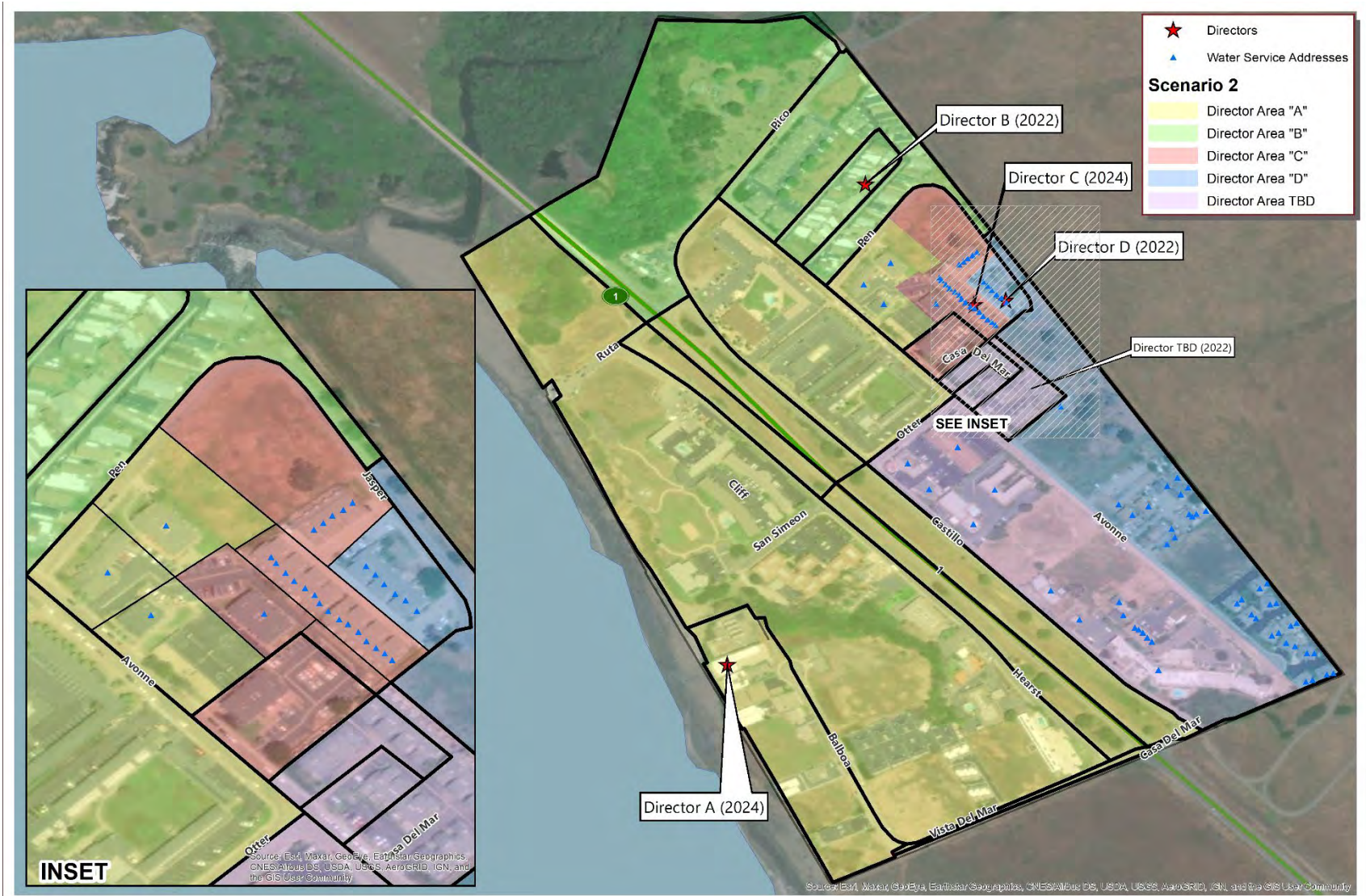
**Citizen Voting Age Population (CVAP); Source: American Community Survey, 2015-2019 Data

▶ CONCEPTUAL VOTING AREAS SCENARIO 2



▶ CONCEPTUAL VOTING AREAS

SCENARIO 2



► DEMOGRAPHICS SCENARIO 2

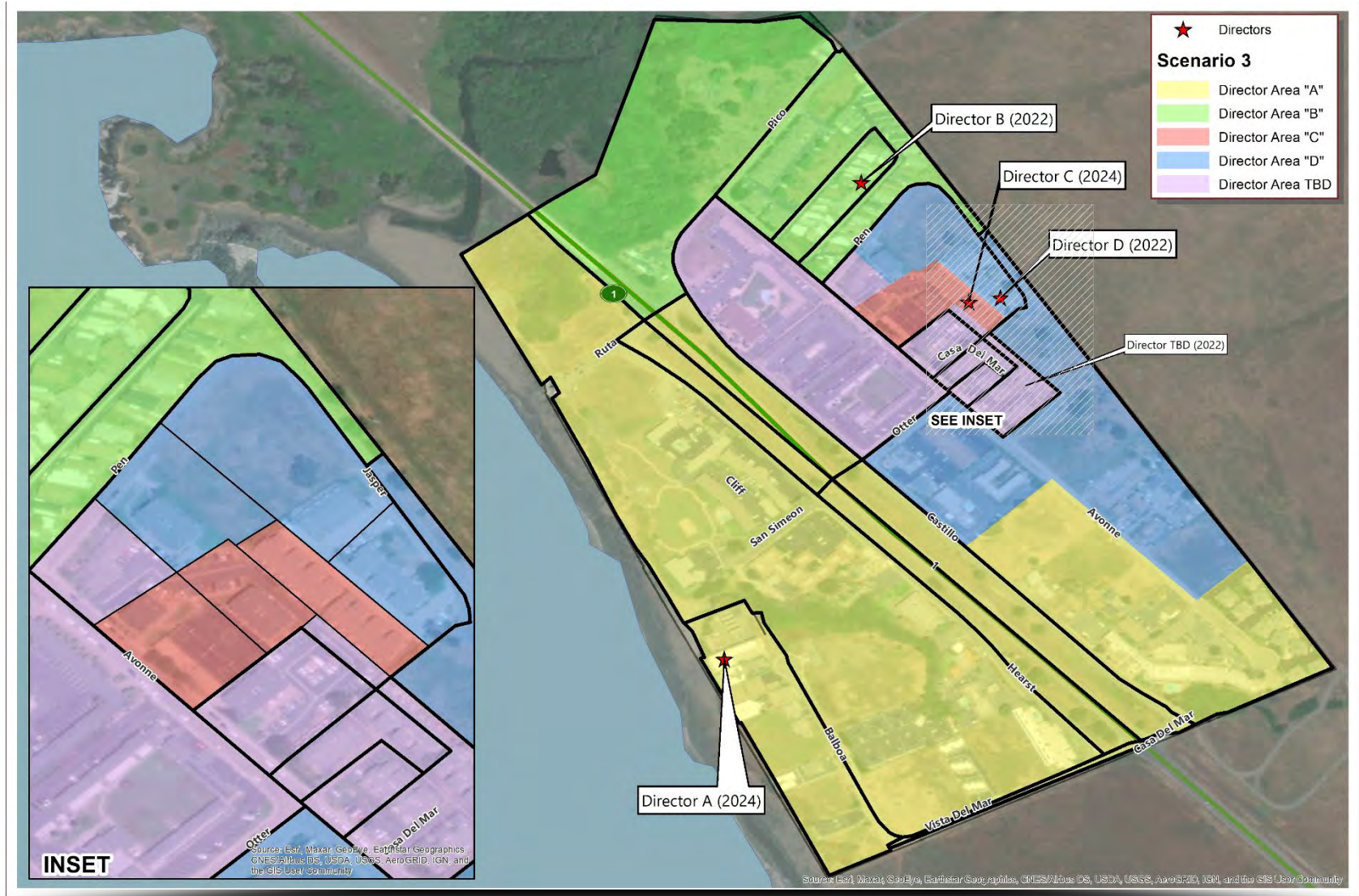
Total Population: 445 Ideal Director Area Size: 89 Total Variance: 9.0%

DIRECTOR AREA	Director Area A		Director Area B		Director Area C		Director Area D		Director Area TBD	
TP* vs. CVAP**	TP	CVAP	TP	CVAP	TP	CVAP	TP	CVAP	TP	CVAP
Population	95	47	87	55	87	32	88	37	88	49
Population Variance	6.7%	N/A	-2.2%	N/A	-2.2%	N/A	-1.1%	N/A	-1.1%	N/A
Hispanic/Latino	66.3%	36.2%	42.5%	25.5%	85.1%	68.8%	75.0%	64.9%	68.2%	49.0%
White	26.3%	40.4%	55.2%	70.9%	9.2%	25.0%	22.7%	35.1%	26.1%	38.8%
Black/African American	0.0%	0.0%	0.0%	0.0%	0.0%	0.0%	0.0%	0.0%	0.0%	0.0%
American Indian/Alaska Native	0.0%	0.0%	0.0%	0.0%	1.1%	0.0%	0.0%	0.0%	0.0%	0.0%
Asian	4.2%	23.4%	1.1%	3.6%	1.1%	6.3%	0.0%	0.0%	3.4%	12.2%
Native Hawaiian/Other Pacific Islander	0.0%	0.0%	0.0%	0.0%	0.0%	0.0%	0.0%	0.0%	0.0%	0.0%
Other	0.0%	0.0%	0.0%	0.0%	0.0%	0.0%	0.0%	0.0%	0.0%	0.0%
Two or More Races	3.2%	0.0%	1.1%	0.0%	3.4%	0.0%	2.3%	0.0%	2.3%	0.0%

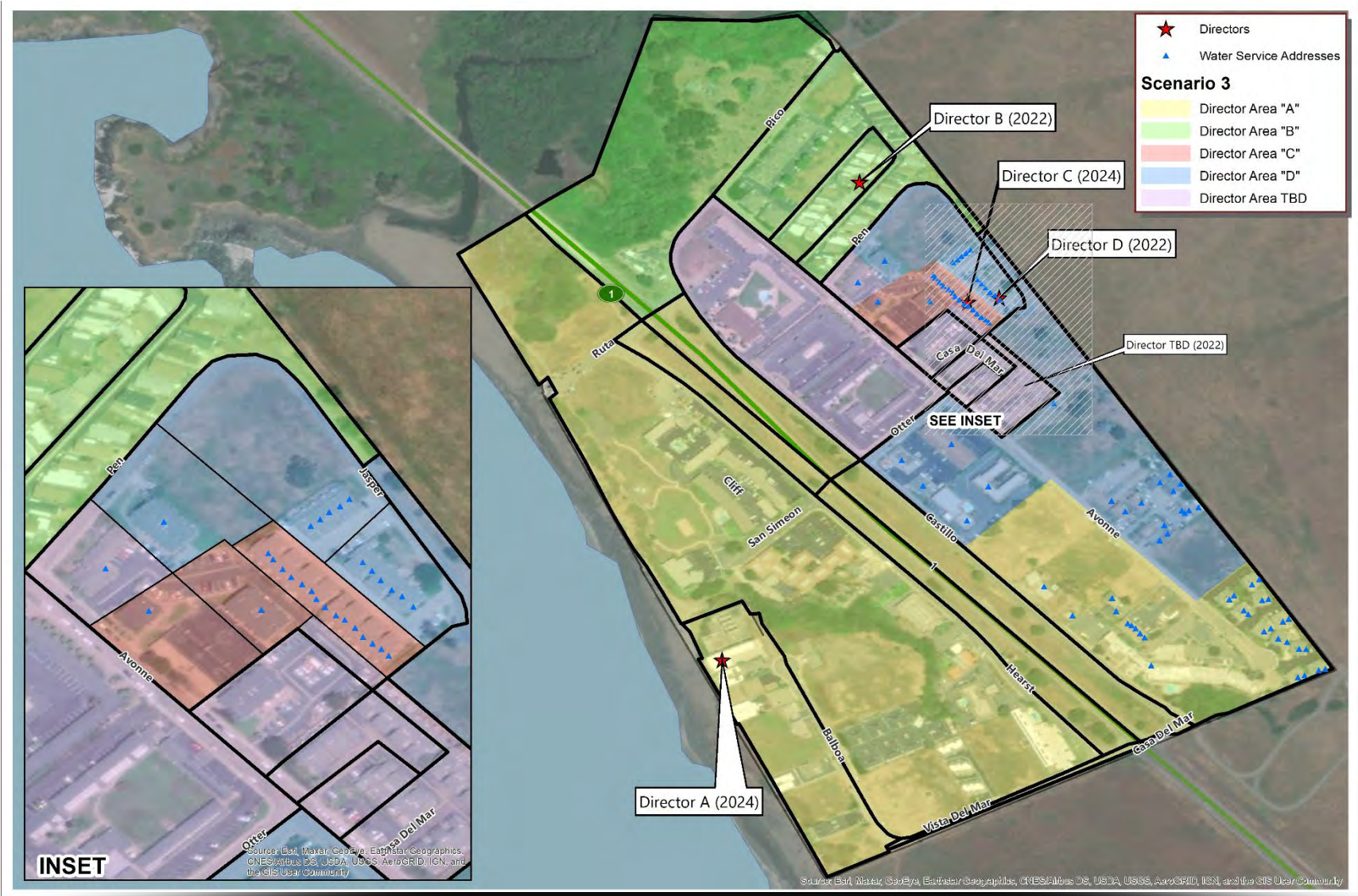
*Total Population; Source: Redistricting Database for California, Published by Statewide Database on September 27, 2021

**Citizen Voting Age Population (CVAP); Source: American Community Survey, 2015-2019 Data

► CONCEPTUAL VOTING AREAS
SCENARIO 3



▶ CONCEPTUAL VOTING AREAS SCENARIO 3



► **DEMOGRAPHICS**
SCENARIO 3

Total Population: 445 Ideal Director Area Size: 89 Total Variance: 5.6%

DIRECTOR AREA	Director Area A		Director Area B		Director Area C		Director Area D		Director Area TBD	
TP* vs. CVAP**	TP	CVAP	TP	CVAP	TP	CVAP	TP	CVAP	TP	CVAP
Population	87	51	87	55	87	32	92	37	92	45
Population Variance	-2.2%	N/A	-2.2%	N/A	-2.2%	N/A	3.4%	N/A	3.4%	N/A
Hispanic/Latino	55.2%	37.3%	42.5%	25.5%	87.4%	65.6%	82.6%	67.6%	68.5%	48.9%
White	35.6%	47.1%	55.2%	70.9%	9.2%	25.0%	16.3%	29.7%	23.9%	35.6%
Black/African American	0.0%	0.0%	0.0%	0.0%	0.0%	0.0%	0.0%	0.0%	0.0%	0.0%
American Indian/Alaska Native	0.0%	0.0%	0.0%	0.0%	1.1%	0.0%	0.0%	0.0%	0.0%	0.0%
Asian	4.6%	15.7%	1.1%	3.6%	1.1%	9.4%	0.0%	2.7%	3.3%	15.6%
Native Hawaiian/Other Pacific Islander	0.0%	0.0%	0.0%	0.0%	0.0%	0.0%	0.0%	0.0%	0.0%	0.0%
Other	0.0%	0.0%	0.0%	0.0%	0.0%	0.0%	0.0%	0.0%	0.0%	0.0%
Two or More Races	4.6%	0.0%	1.1%	0.0%	1.1%	0.0%	1.1%	0.0%	4.3%	0.0%

*Total Population; Source: Redistricting Database for California, Published by Statewide Database on September 27, 2021

**Citizen Voting Age Population (CVAP); Source: American Community Survey, 2015-2019 Data



QUESTIONS

SAN SIMEON COMMUNITY SERVICES DISTRICT

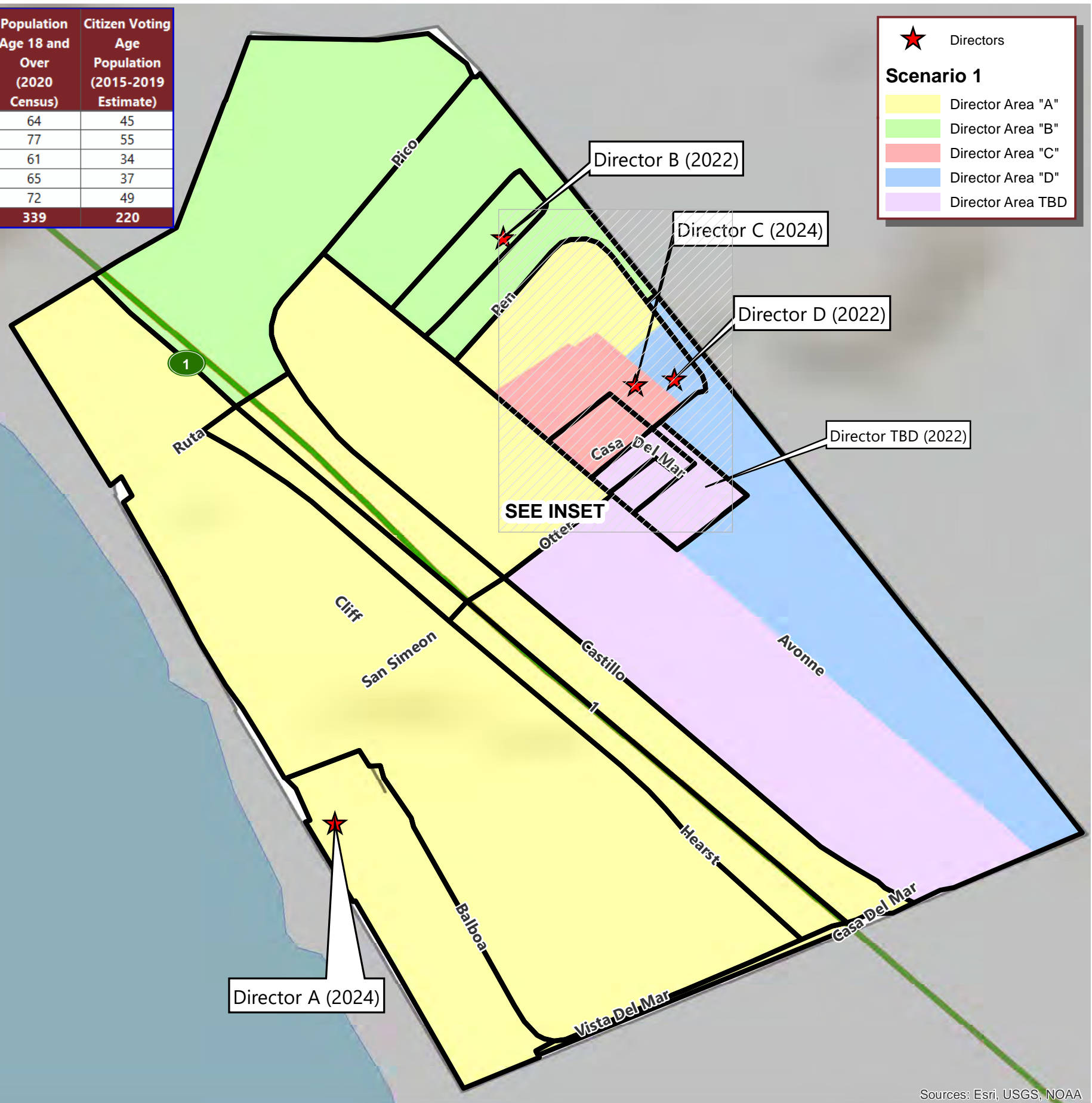
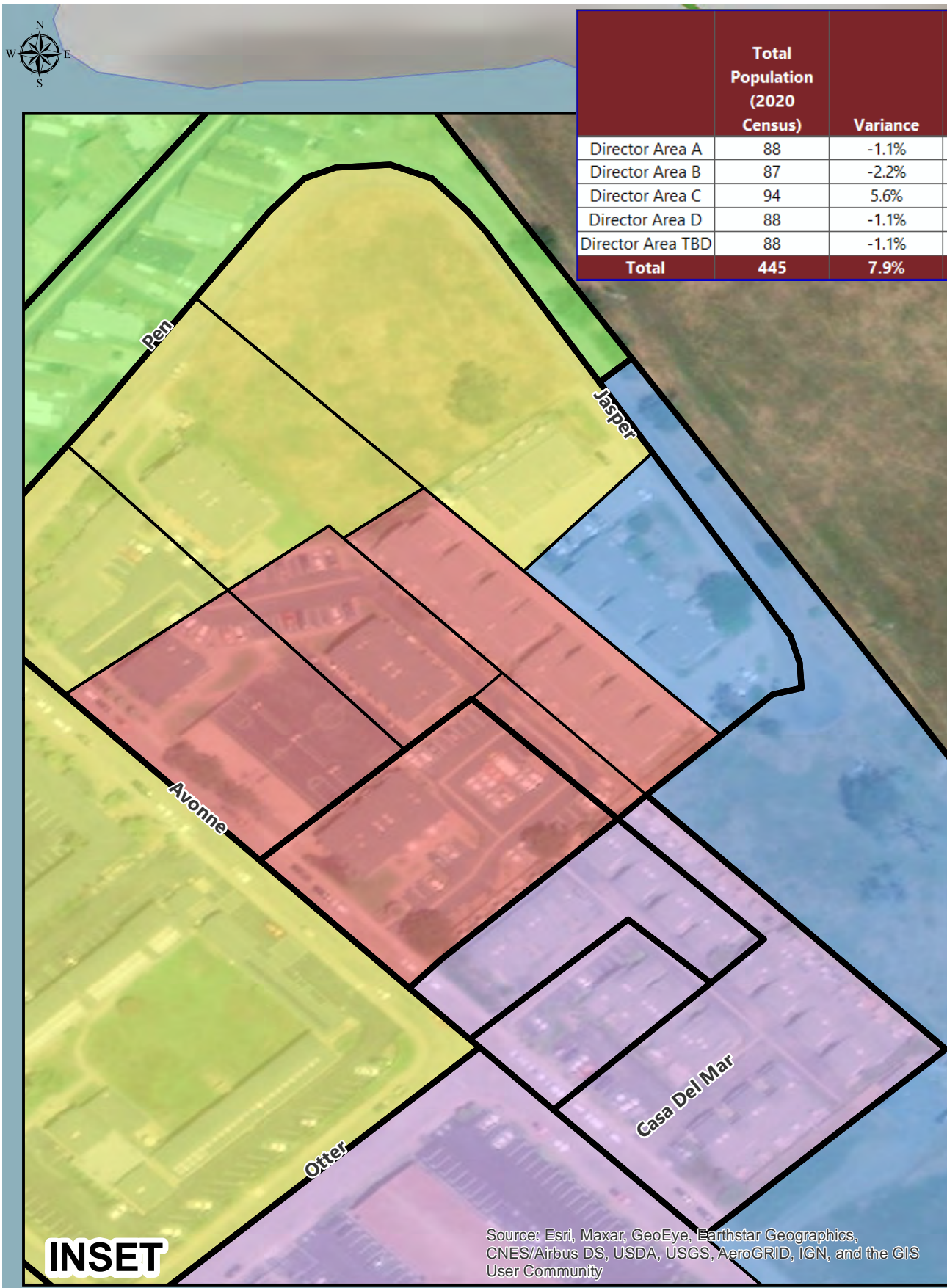
PROPOSED SCENARIO 1

	Total Population (2020 Census)	Variance	Population Age 18 and Over (2020 Census)	Citizen Voting Age Population (2015-2019 Estimate)
Director Area A	88	-1.1%	64	45
Director Area B	87	-2.2%	77	55
Director Area C	94	5.6%	61	34
Director Area D	88	-1.1%	65	37
Director Area TBD	88	-1.1%	72	49
Total	445	7.9%	339	220

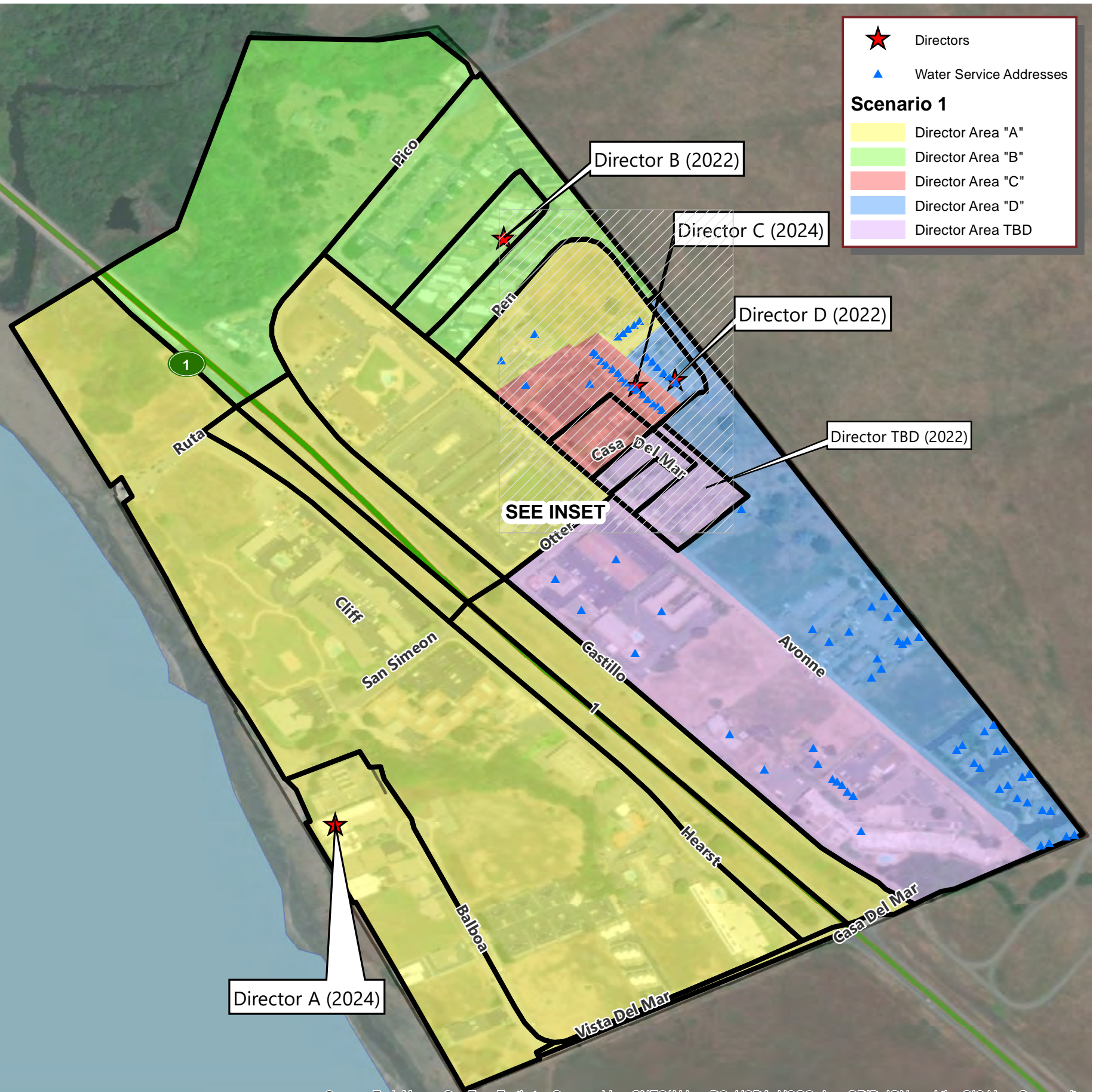
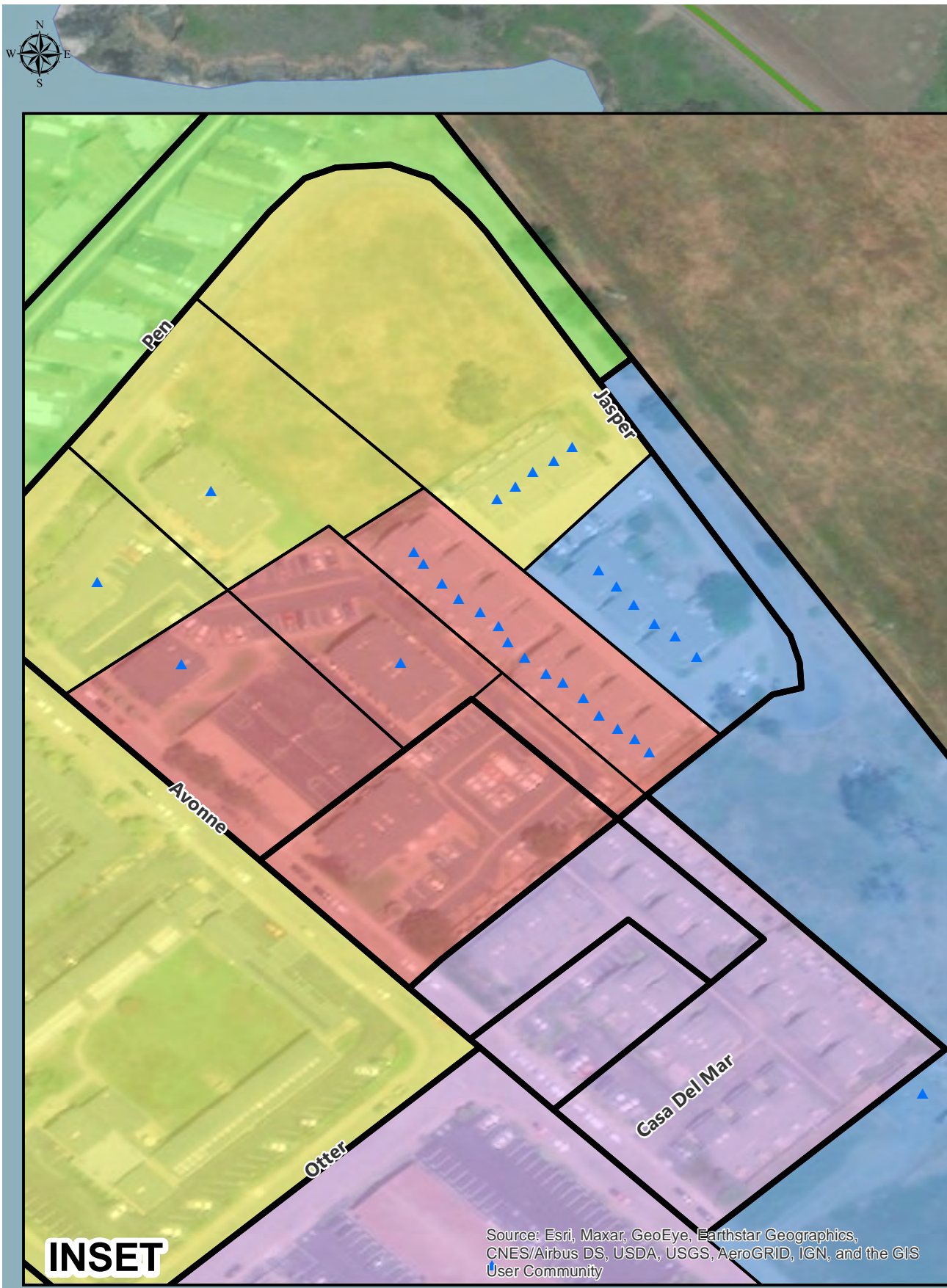
★ Directors

Scenario 1

- Director Area "A"
- Director Area "B"
- Director Area "C"
- Director Area "D"
- Director Area TBD



Sources: Esri, USGS, NOAA



Source: Esri, Maxar, GeoEye, Earthstar Geographics, CNES/Airbus DS, USDA, USGS, AeroGRID, IGN, and the GIS User Community

SAN SIMEON CSD

CONCEPTUAL DIRECTOR AREAS - SCENARIO 1

Total Population:	445	Ideal Population:	89	Variance:	7.9%
--------------------------	------------	--------------------------	-----------	------------------	-------------

Total Population (2020 Census)					
	Director Area A	Director Area B	Director Area C	Director Area D	Director Area TBD
Population	88	87	94	88	88
Population Variance	-1	-2	5	-1	-1
	-1.1%	-2.2%	5.6%	-1.1%	-1.1%
Hispanic/Latino	64.8%	42.5%	85.1%	75.0%	68.2%
White	27.3%	55.2%	9.6%	22.7%	26.1%
Black/ African American	0.0%	0.0%	0.0%	0.0%	0.0%
American Indian/ Alaska Native	0.0%	0.0%	1.1%	0.0%	0.0%
Asian	4.5%	1.1%	1.1%	0.0%	3.4%
Native Hawaiian/ Other Pacific Islander	0.0%	0.0%	0.0%	0.0%	0.0%
Other	0.0%	0.0%	0.0%	0.0%	0.0%
Two or More Races	3.4%	1.1%	3.2%	2.3%	2.3%

Population 18 and Over (2020 Census)					
	Director Area A	Director Area B	Director Area C	Director Area D	Director Area TBD
Population	64	77	61	65	72
Hispanic/Latino	56.3%	35.1%	77.0%	72.3%	62.5%
White	32.8%	62.3%	14.8%	27.7%	30.6%
Black/ African American	0.0%	0.0%	0.0%	0.0%	0.0%
American Indian/ Alaska Native	0.0%	0.0%	1.6%	0.0%	0.0%
Asian	6.3%	1.3%	1.6%	0.0%	4.2%
Native Hawaiian/ Other Pacific Islander	0.0%	0.0%	0.0%	0.0%	0.0%
Other	0.0%	0.0%	0.0%	0.0%	0.0%
Two or More Races	4.7%	1.3%	4.9%	0.0%	2.8%

Citizens by Voting Age Population Estimate (2015-2019)					
	Director Area A	Director Area B	Director Area C	Director Area D	Director Area TBD
Population	45	55	34	37	49
Hispanic/Latino	37.8%	25.5%	64.7%	64.9%	49.0%
White	40.0%	70.9%	26.5%	35.1%	38.8%
Black/ African American	0.0%	0.0%	0.0%	0.0%	0.0%
American Indian/ Alaska Native	0.0%	0.0%	0.0%	0.0%	0.0%
Asian	22.2%	3.6%	8.8%	0.0%	12.2%
Other	0.0%	0.0%	0.0%	0.0%	0.0%
Two or More Races	0.0%	0.0%	0.0%	0.0%	0.0%

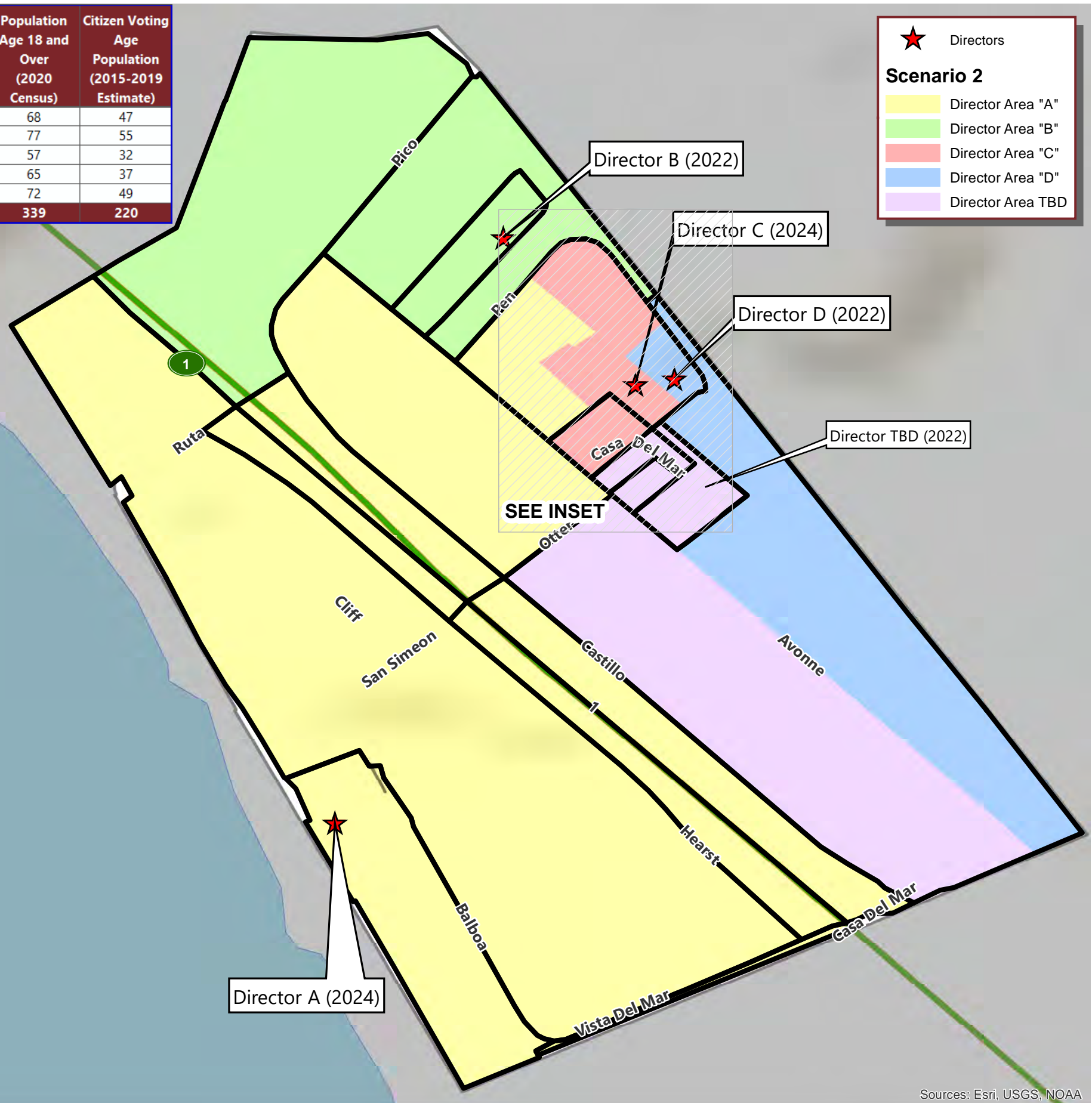
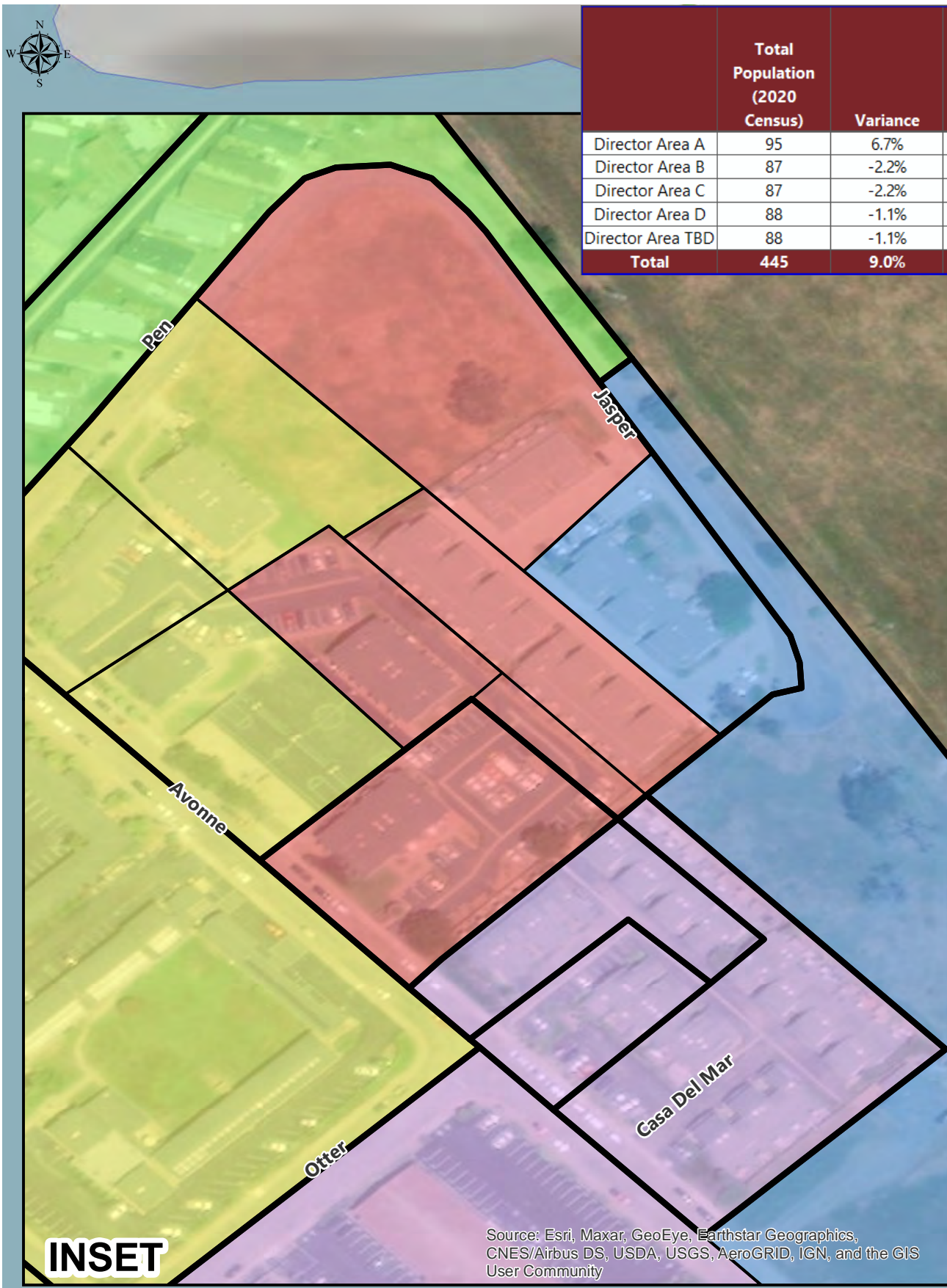
SAN SIMEON COMMUNITY SERVICES DISTRICT

	Total Population (2020 Census)	Variance	Population Age 18 and Over (2020 Census)	Citizen Voting Age Population (2015-2019 Estimate)
Director Area A	95	6.7%	68	47
Director Area B	87	-2.2%	77	55
Director Area C	87	-2.2%	57	32
Director Area D	88	-1.1%	65	37
Director Area TBD	88	-1.1%	72	49
Total	445	9.0%	339	220

★ Directors

Scenario 2

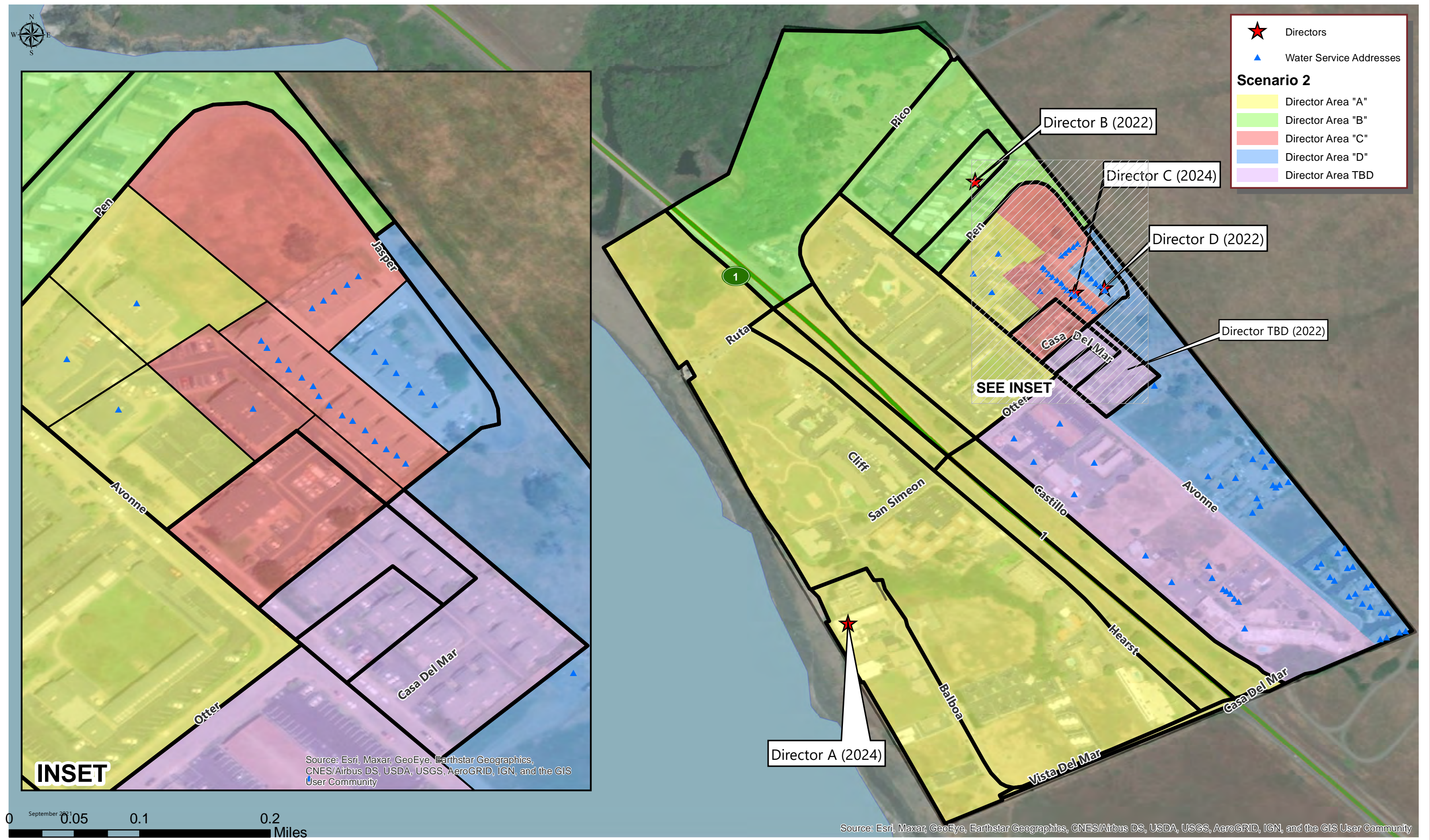
- Director Area "A"
- Director Area "B"
- Director Area "C"
- Director Area "D"
- Director Area TBD



Source: Esri, Maxar, GeoEye, Earthstar Geographics, CNES/Airbus DS, USDA, USGS, AeroGRID, IGN, and the GIS User Community



Sources: Esri, USGS, NOAA



★ Directors
 ▲ Water Service Addresses

Scenario 2

- Director Area "A"
- Director Area "B"
- Director Area "C"
- Director Area "D"
- Director Area TBD

Source: Esri, Maxar, GeoEye, Earthstar Geographics, CNES/Airbus DS, USDA, USGS, AeroGRID, IGN, and the GIS User Community

Source: Esri, Maxar, GeoEye, Earthstar Geographics, CNES/Airbus DS, USDA, USGS, AeroGRID, IGN, and the GIS User Community

INSET

SEE INSET



SAN SIMEON CSD

CONCEPTUAL DIRECTOR AREAS - SCENARIO 2

Total Population:	445	Ideal Population:	89	Variance:	9.0%
--------------------------	------------	--------------------------	-----------	------------------	-------------

Total Population (2020 Census)					
	Director Area A	Director Area B	Director Area C	Director Area D	Director Area TBD
Population	95	87	87	88	88
Population Variance	6	-2	-2	-1	-1
	6.7%	-2.2%	-2.2%	-1.1%	-1.1%
Hispanic/Latino	66.3%	42.5%	85.1%	75.0%	68.2%
White	26.3%	55.2%	9.2%	22.7%	26.1%
Black/ African American	0.0%	0.0%	0.0%	0.0%	0.0%
American Indian/ Alaska Native	0.0%	0.0%	1.1%	0.0%	0.0%
Asian	4.2%	1.1%	1.1%	0.0%	3.4%
Native Hawaiian/ Other Pacific Islander	0.0%	0.0%	0.0%	0.0%	0.0%
Other	0.0%	0.0%	0.0%	0.0%	0.0%
Two or More Races	3.2%	1.1%	3.4%	2.3%	2.3%

Population 18 and Over (2020 Census)					
	Director Area A	Director Area B	Director Area C	Director Area D	Director Area TBD
Population	68	77	57	65	72
Hispanic/Latino	57.4%	35.1%	77.2%	72.3%	62.5%
White	32.4%	62.3%	14.0%	27.7%	30.6%
Black/ African American	0.0%	0.0%	0.0%	0.0%	0.0%
American Indian/ Alaska Native	0.0%	0.0%	1.8%	0.0%	0.0%
Asian	5.9%	1.3%	1.8%	0.0%	4.2%
Native Hawaiian/ Other Pacific Islander	0.0%	0.0%	0.0%	0.0%	0.0%
Other	0.0%	0.0%	0.0%	0.0%	0.0%
Two or More Races	4.4%	1.3%	5.3%	0.0%	2.8%

Citizens by Voting Age Population Estimate (2015-2019)					
	Director Area A	Director Area B	Director Area C	Director Area D	Director Area TBD
Population	47	55	32	37	49
Hispanic/Latino	36.2%	25.5%	68.8%	64.9%	49.0%
White	40.4%	70.9%	25.0%	35.1%	38.8%
Black/ African American	0.0%	0.0%	0.0%	0.0%	0.0%
American Indian/ Alaska Native	0.0%	0.0%	0.0%	0.0%	0.0%
Asian	23.4%	3.6%	6.3%	0.0%	12.2%
Native Hawaiian/ Other Pacific Islander	0.0%	0.0%	0.0%	0.0%	0.0%
Other	0.0%	0.0%	0.0%	0.0%	0.0%
Two or More Races	0.0%	0.0%	0.0%	0.0%	0.0%

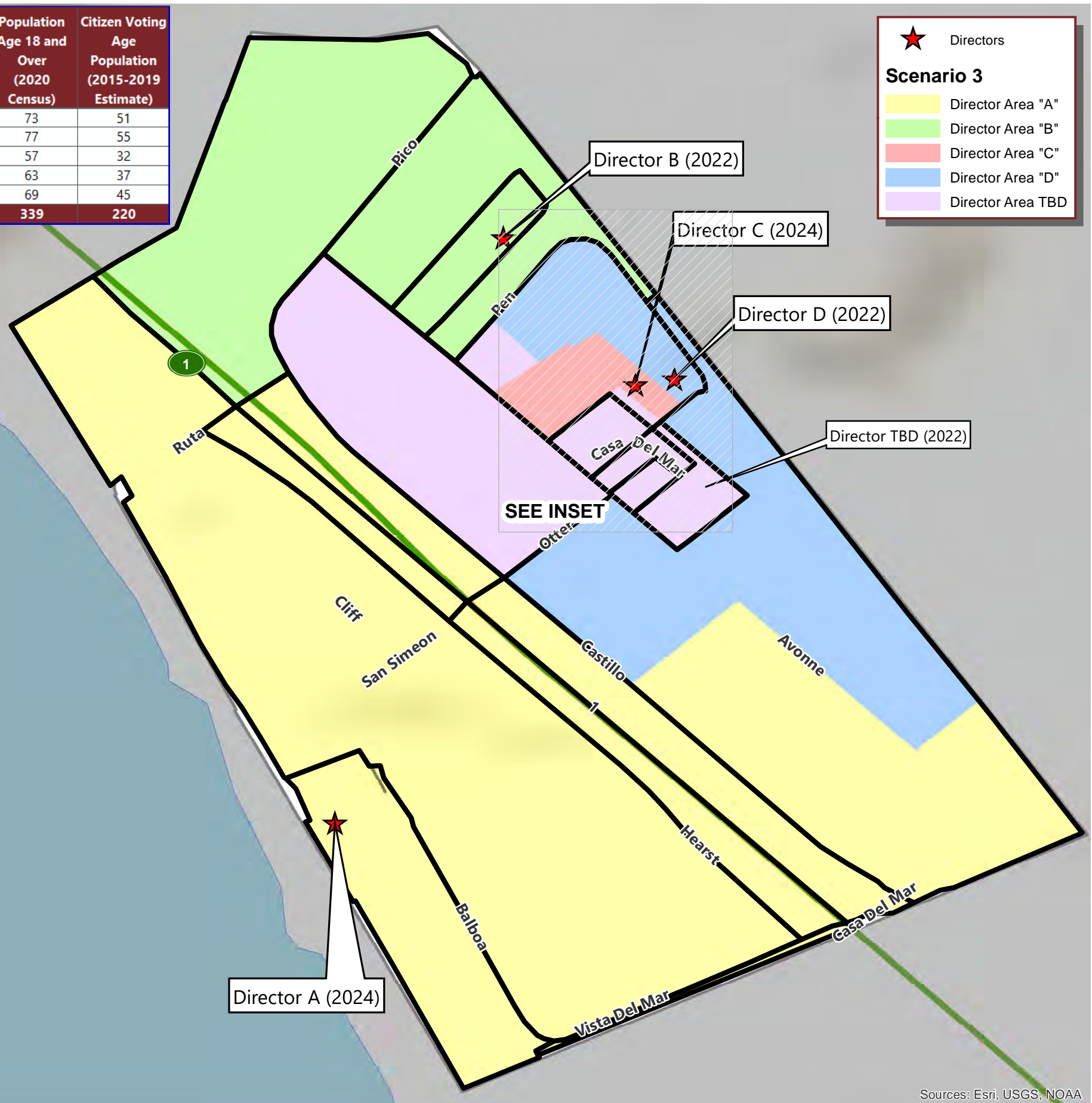
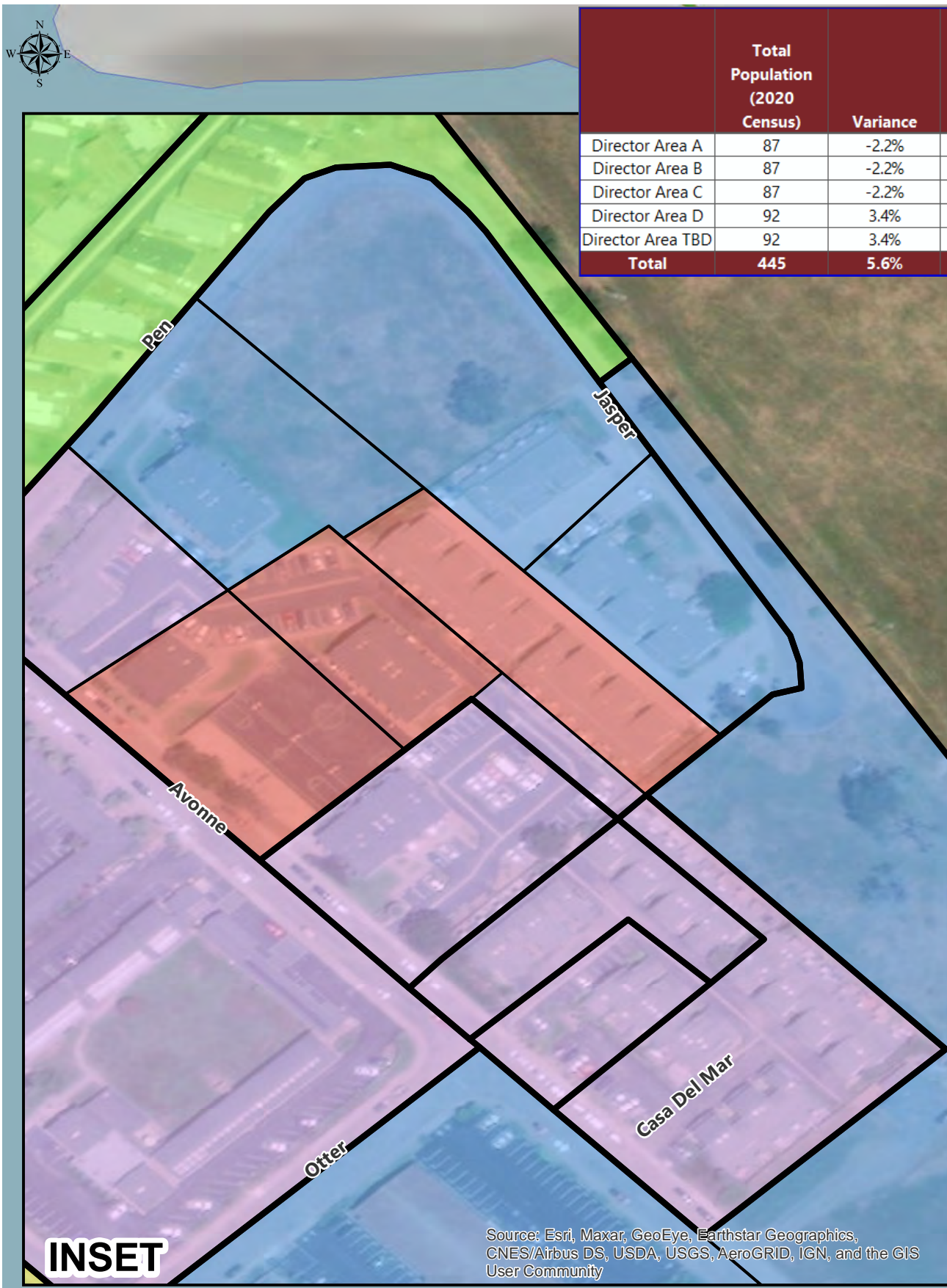
SAN SIMEON COMMUNITY SERVICES DISTRICT

	Total Population (2020 Census)	Variance	Population Age 18 and Over (2020 Census)	Citizen Voting Age Population (2015-2019 Estimate)
Director Area A	87	-2.2%	73	51
Director Area B	87	-2.2%	77	55
Director Area C	87	-2.2%	57	32
Director Area D	92	3.4%	63	37
Director Area TBD	92	3.4%	69	45
Total	445	5.6%	339	220

★ Directors

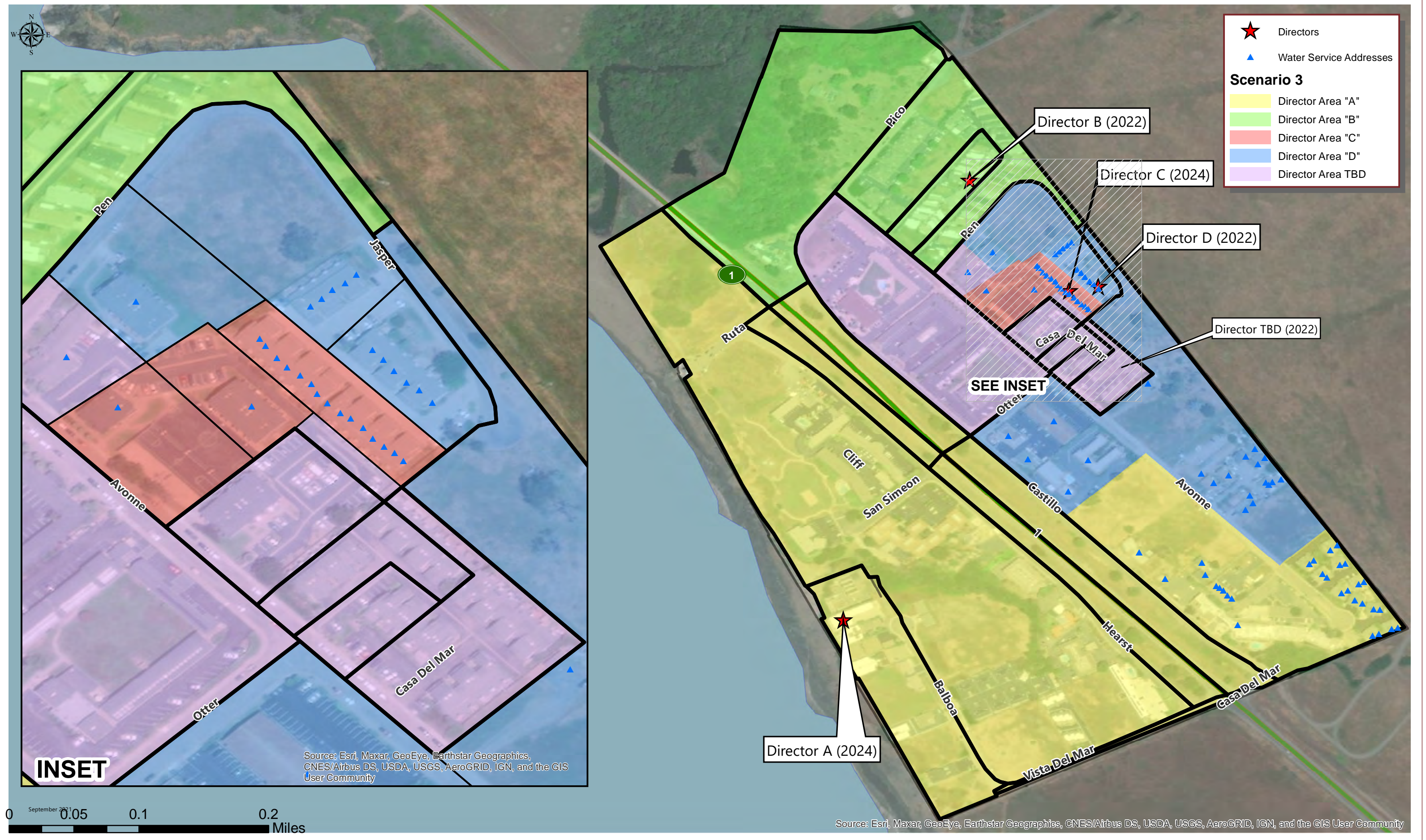
Scenario 3

- Director Area "A"
- Director Area "B"
- Director Area "C"
- Director Area "D"
- Director Area TBD



Source: Esri, Maxar, GeoEye, Earthstar Geographics, CNES/Airbus DS, USDA, USGS, AeroGRID, IGN, and the GIS User Community

Sources: Esri, USGS, NOAA



SAN SIMEON CSD

CONCEPTUAL DIRECTOR AREAS - SCENARIO 3

Total Population:	445	Ideal Population:	89	Variance:	5.6%
--------------------------	------------	--------------------------	-----------	------------------	-------------

Total Population (2020 Census)					
	Director Area A	Director Area B	Director Area C	Director Area D	Director Area TBD
Population	87	87	87	92	92
Population Variance	-2	-2	-2	3	3
	-2.2%	-2.2%	-2.2%	3.4%	3.4%
Hispanic/Latino	55.2%	42.5%	87.4%	82.6%	68.5%
White	35.6%	55.2%	9.2%	16.3%	23.9%
Black/ African American	0.0%	0.0%	0.0%	0.0%	0.0%
American Indian/ Alaska Native	0.0%	0.0%	1.1%	0.0%	0.0%
Asian	4.6%	1.1%	1.1%	0.0%	3.3%
Native Hawaiian/ Other Pacific Islander	0.0%	0.0%	0.0%	0.0%	0.0%
Other	0.0%	0.0%	0.0%	0.0%	0.0%
Two or More Races	4.6%	1.1%	1.1%	1.1%	4.3%

Population 18 and Over (2020 Census)					
	Director Area A	Director Area B	Director Area C	Director Area D	Director Area TBD
Population	73	77	57	63	69
Hispanic/Latino	50.7%	35.1%	80.7%	77.8%	62.3%
White	39.7%	62.3%	14.0%	22.2%	27.5%
Black/ African American	0.0%	0.0%	0.0%	0.0%	0.0%
American Indian/ Alaska Native	0.0%	0.0%	1.8%	0.0%	0.0%
Asian	5.5%	1.3%	1.8%	0.0%	4.3%
Native Hawaiian/ Other Pacific Islander	0.0%	0.0%	0.0%	0.0%	0.0%
Other	0.0%	0.0%	0.0%	0.0%	0.0%
Two or More Races	4.1%	1.3%	1.8%	0.0%	5.8%

Citizens by Voting Age Population Estimate (2015-2019)					
	Director Area A	Director Area B	Director Area C	Director Area D	Director Area TBD
Population	51	55	32	37	45
Hispanic/Latino	37.3%	25.5%	65.6%	67.6%	48.9%
White	47.1%	70.9%	25.0%	29.7%	35.6%
Black/ African American	0.0%	0.0%	0.0%	0.0%	0.0%
American Indian/ Alaska Native	0.0%	0.0%	0.0%	0.0%	0.0%
Asian	15.7%	3.6%	9.4%	2.7%	15.6%
Native Hawaiian/ Other Pacific Islander	0.0%	0.0%	0.0%	0.0%	0.0%
Other	0.0%	0.0%	0.0%	0.0%	0.0%
Two or More Races	0.0%	0.0%	0.0%	0.0%	0.0%