



▶ **TRUSTEE AREA  
PROCESS**

SAN SIMEON COMMUNITY  
SERVICE DISTRICT

**JANUARY 31, 2022**



**COOPERATIVE  
STRATEGIES**  
ASSESS • PLAN • FUND • BUILD

▶ BACKGROUND

**WHAT IS THE CALIFORNIA VOTING RIGHTS ACT (“CVRA”)?**

- Took effect January 1, 2003.
- Prohibits the use of “at-large” elections when such an election system:

*“impairs the ability of a protected class to elect candidates of its choice or its ability to influence the outcome of an election....”*

-(Elections Code §14027.)

▶ TRUSTEE AREA PROCESS

DATE	ACTIVITY
January 31, 2022	<b>Board Meeting: First Pre-Map Public Hearing and Presentation</b>
February 8, 2022	<b>Board Meeting: Second Pre-Map Public Hearing and Presentation</b>
February-March 2022	Preparation of draft trustee area scenarios
March 8, 2022	<b>Board Meeting: First Public Hearing on Trustee Area Scenarios</b>
April 12, 2022	<b>Board Meeting: Second Public Hearing on Trustee Area Scenarios</b>
TBD - If Necessary	<b>Board Meeting: Third Public Hearing on Trustee Area Scenarios (If Necessary)</b>
April – May 2022	Cooperative Strategies sends Final Voting Area Map to the County Registrar of Voters
November 8, 2022	First Election Held Utilizing Trustee Areas

## ▶ CONSIDERATIONS IN TRUSTEE AREAS



Each area shall contain nearly equal number of inhabitants



Follow man-made and natural geographic features, as much as possible



Drawn to comply with the Federal Voting Rights Act



Respect incumbency, if possible



Compact and contiguous, as much as possible



Other local considerations (i.e., school boundaries, locations of school sites)



Respect communities of interest, as much as possible

► DISTRICT DEMOGRAPHICS  
**2010 and 2020 CENSUS DATA COMPARISON**

**2010 to 2020 Census Comparison (Trustee Area Creation)**

Population	2010 Census		2020 Census		Change	
	Total	Percent	Total	Percent	Population	Percent
Hispanic/Latino	249	55.3%	296	66.5%	47	18.9%
White	181	40.2%	125	28.1%	-56	-30.9%
Black/ African American	1	0.2%	0	0.0%	-1	-100.0%
American Indian/Alaska Native	5	1.1%	2	0.4%	-3	-60.0%
Asian	6	1.3%	10	2.2%	4	66.7%
Hawaiian/ Pacific Islander	0	0.0%	0	0.0%	0	0.0%
Other	0	0.0%	0	0.0%	0	0.0%
Two or More Races	8	1.8%	12	2.7%	4	50.0%
<b>Total Population</b>	<b>450</b>	<b>100%</b>	<b>445</b>	<b>100%</b>	<b>-5</b>	<b>-1.1%</b>

*\*Source: Statewide 2021 Redistricting Database (Sept 27 file) (Census 2020)*

## ► DISTRICT DEMOGRAPHICS 2020 CENSUS DATA

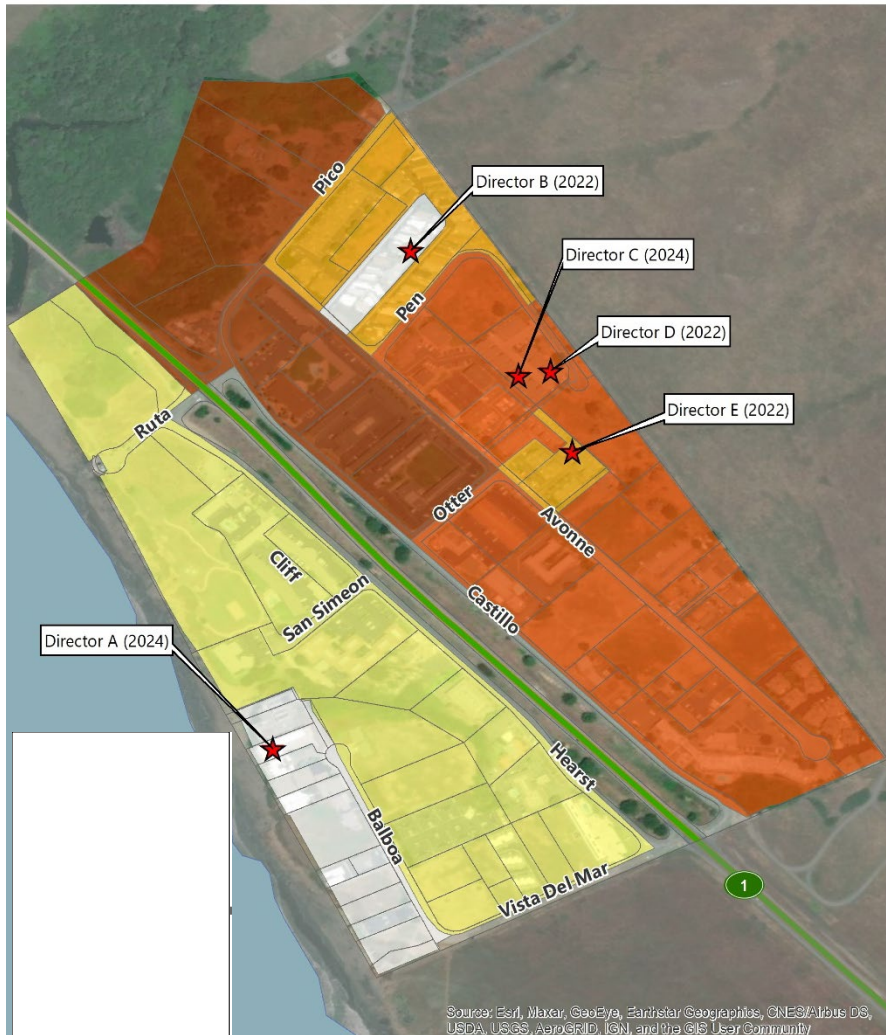


Population	Total Population		Age 18 and over	
	Total	%	Total	%
Hispanic/Latino	296	66.5%	197	58.1%
White	125	28.1%	119	35.1%
Black / African American	0	0.0%	0	0.0%
American Indian /Alaska Native	2	0.4%	2	0.6%
Asian	10	2.2%	10	2.9%
Hawaiian/ Pacific Islander	0	0.0%	0	0.0%
Two or More Races	0	0.0%	0	0.0%
Other	12	2.7%	11	3.2%
<b>Total</b>	<b>445</b>	<b>100%</b>	<b>339</b>	<b>100%</b>

\*Source: Statewide 2021 Redistricting Database (Sept 27 file) (Census 2020)



► DISTRICT DEMOGRAPHICS  
**CITIZEN VOTING AGE POPULATION ESTIMATES**



Population	2015-2019 CVAP	
	Total	%
Hispanic/Latino	103	46.8%
White	97	44.1%
Black / African American	0	0.0%
American Indian / Alaska Native	0	0.0%
Asian	20	9.1%
Hawaiian/ Pacific Islander	0	0.0%
Two or More Races	0	0.0%
<b>Total</b>	<b>220</b>	<b>100%</b>

\*Source: American Community Survey, 2015-2019 Data

▶ HOW SHOULD LINES BE DRAWN?





▶ PRE-MAP PUBLIC HEARING  
**EXAMPLES OF FEEDBACK FOR MAPPING PROCESS**

***“I would like to keep Neighborhood X and Neighborhood Y in the same Director Area...”***

▶ PRE-MAP PUBLIC HEARING  
EXAMPLES OF FEEDBACK FOR MAPPING PROCESS

*I think:*

- Major Roads, Highways/Freeways
- All of Y community should be in one area
- Every Director Area should serve \_\_\_ boundaries/sites

*... may make sense as a Director Area boundary because ...*

- It keeps communities together
- It provides good representation

A row of yellow school buses is parked in a grassy field under a cloudy sky. A large, stylized, semi-transparent 'S' graphic is overlaid on the image, framing the word 'QUESTIONS' in the center.

# QUESTIONS