

SAN SIMEON COMMUNITY SERVICES DISTRICT

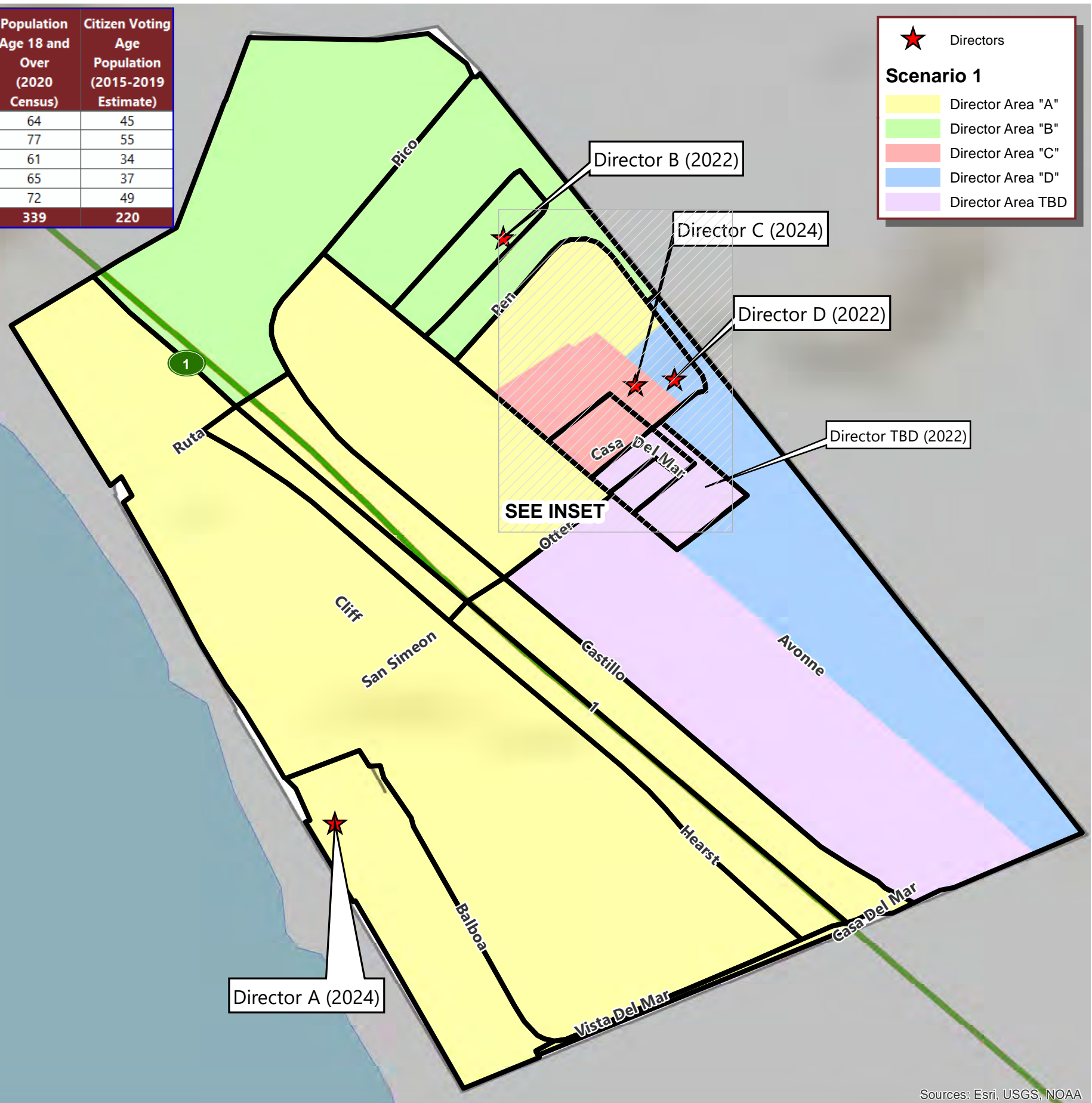
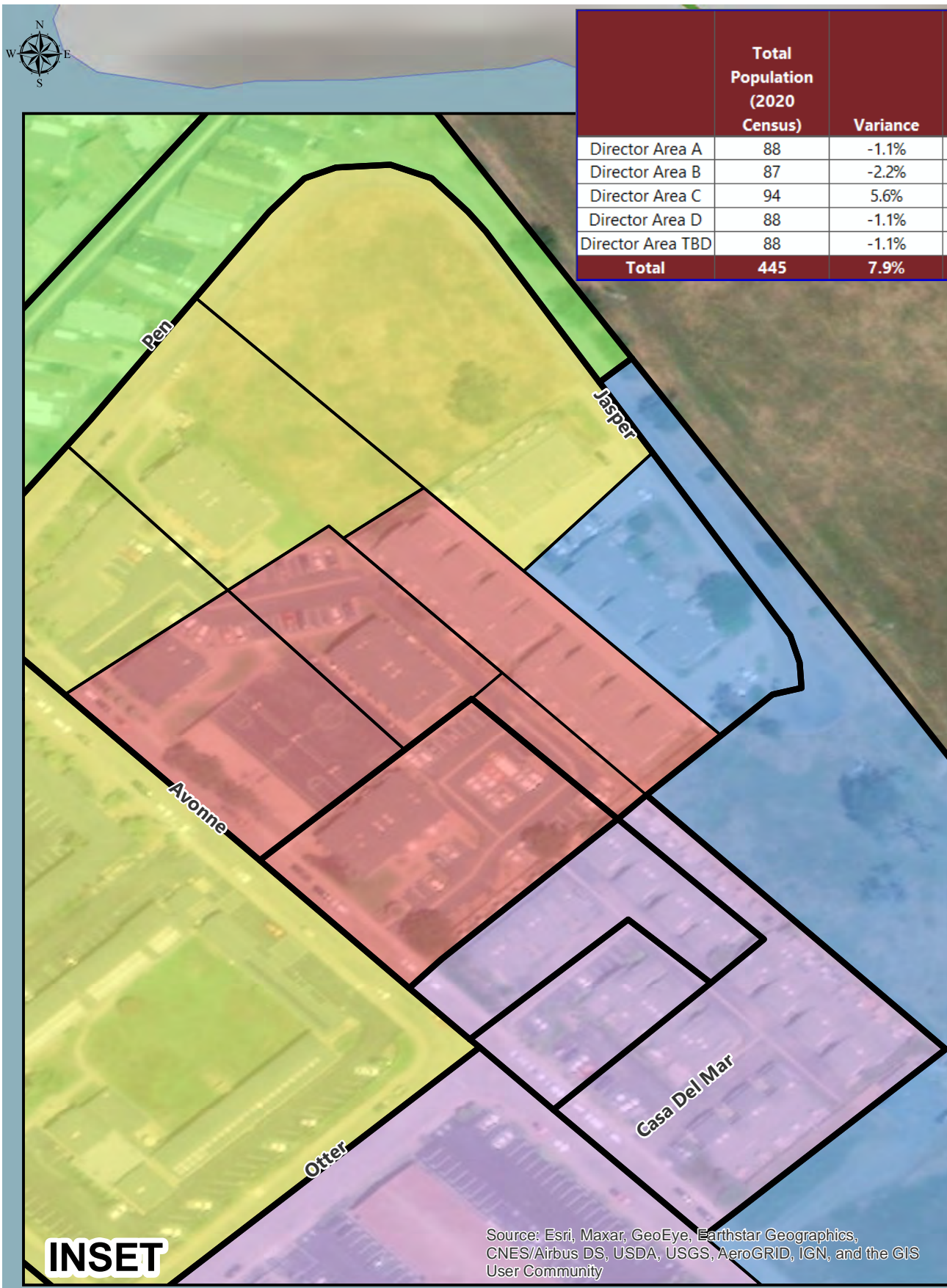
PROPOSED SCENARIO 1

	Total Population (2020 Census)	Variance	Population Age 18 and Over (2020 Census)	Citizen Voting Age Population (2015-2019 Estimate)
Director Area A	88	-1.1%	64	45
Director Area B	87	-2.2%	77	55
Director Area C	94	5.6%	61	34
Director Area D	88	-1.1%	65	37
Director Area TBD	88	-1.1%	72	49
Total	445	7.9%	339	220

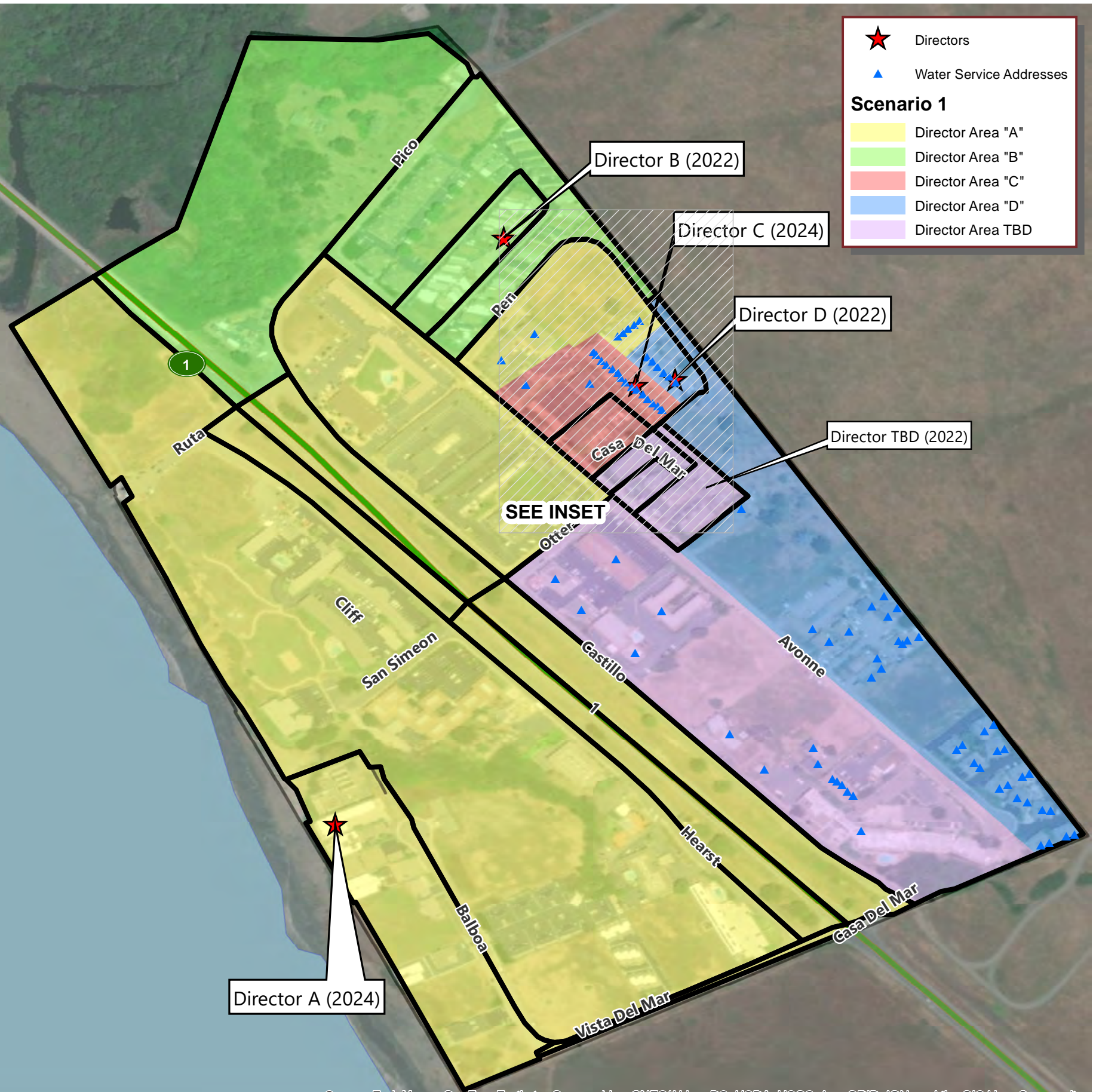
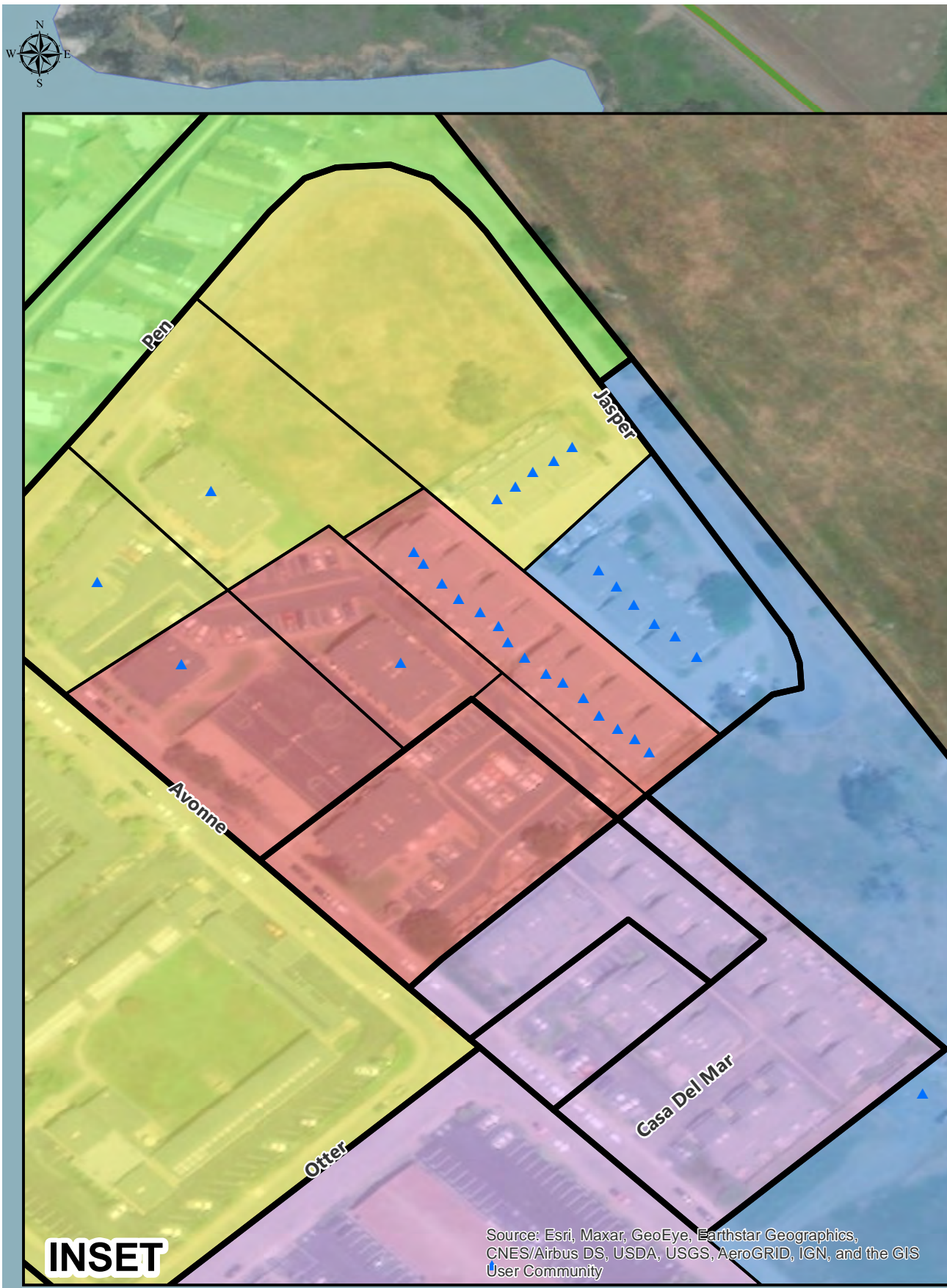
★ Directors

Scenario 1

- Director Area "A"
- Director Area "B"
- Director Area "C"
- Director Area "D"
- Director Area TBD



Sources: Esri, USGS, NOAA



Source: Esri, Maxar, GeoEye, Earthstar Geographics, CNES/Airbus DS, USDA, USGS, AeroGRID, IGN, and the GIS User Community

SAN SIMEON CSD

CONCEPTUAL DIRECTOR AREAS - SCENARIO 1

Total Population:	445	Ideal Population:	89	Variance:	7.9%
--------------------------	------------	--------------------------	-----------	------------------	-------------

Total Population (2020 Census)					
	Director Area A	Director Area B	Director Area C	Director Area D	Director Area TBD
Population	88	87	94	88	88
Population Variance	-1	-2	5	-1	-1
	-1.1%	-2.2%	5.6%	-1.1%	-1.1%
Hispanic/Latino	64.8%	42.5%	85.1%	75.0%	68.2%
White	27.3%	55.2%	9.6%	22.7%	26.1%
Black/ African American	0.0%	0.0%	0.0%	0.0%	0.0%
American Indian/ Alaska Native	0.0%	0.0%	1.1%	0.0%	0.0%
Asian	4.5%	1.1%	1.1%	0.0%	3.4%
Native Hawaiian/ Other Pacific Islander	0.0%	0.0%	0.0%	0.0%	0.0%
Other	0.0%	0.0%	0.0%	0.0%	0.0%
Two or More Races	3.4%	1.1%	3.2%	2.3%	2.3%

Population 18 and Over (2020 Census)					
	Director Area A	Director Area B	Director Area C	Director Area D	Director Area TBD
Population	64	77	61	65	72
Hispanic/Latino	56.3%	35.1%	77.0%	72.3%	62.5%
White	32.8%	62.3%	14.8%	27.7%	30.6%
Black/ African American	0.0%	0.0%	0.0%	0.0%	0.0%
American Indian/ Alaska Native	0.0%	0.0%	1.6%	0.0%	0.0%
Asian	6.3%	1.3%	1.6%	0.0%	4.2%
Native Hawaiian/ Other Pacific Islander	0.0%	0.0%	0.0%	0.0%	0.0%
Other	0.0%	0.0%	0.0%	0.0%	0.0%
Two or More Races	4.7%	1.3%	4.9%	0.0%	2.8%

Citizens by Voting Age Population Estimate (2015-2019)					
	Director Area A	Director Area B	Director Area C	Director Area D	Director Area TBD
Population	45	55	34	37	49
Hispanic/Latino	37.8%	25.5%	64.7%	64.9%	49.0%
White	40.0%	70.9%	26.5%	35.1%	38.8%
Black/ African American	0.0%	0.0%	0.0%	0.0%	0.0%
American Indian/ Alaska Native	0.0%	0.0%	0.0%	0.0%	0.0%
Asian	22.2%	3.6%	8.8%	0.0%	12.2%
Other	0.0%	0.0%	0.0%	0.0%	0.0%
Two or More Races	0.0%	0.0%	0.0%	0.0%	0.0%