

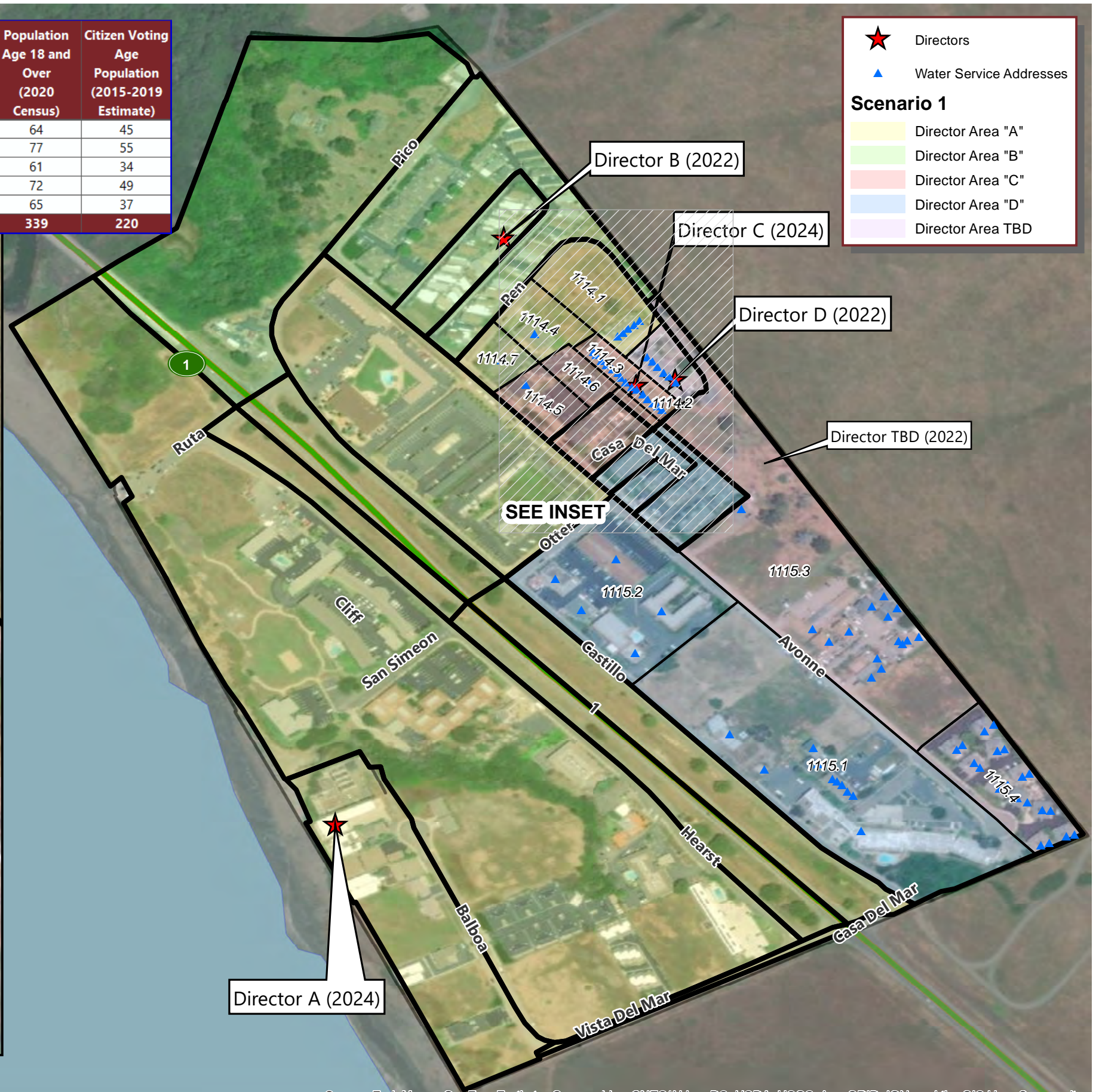
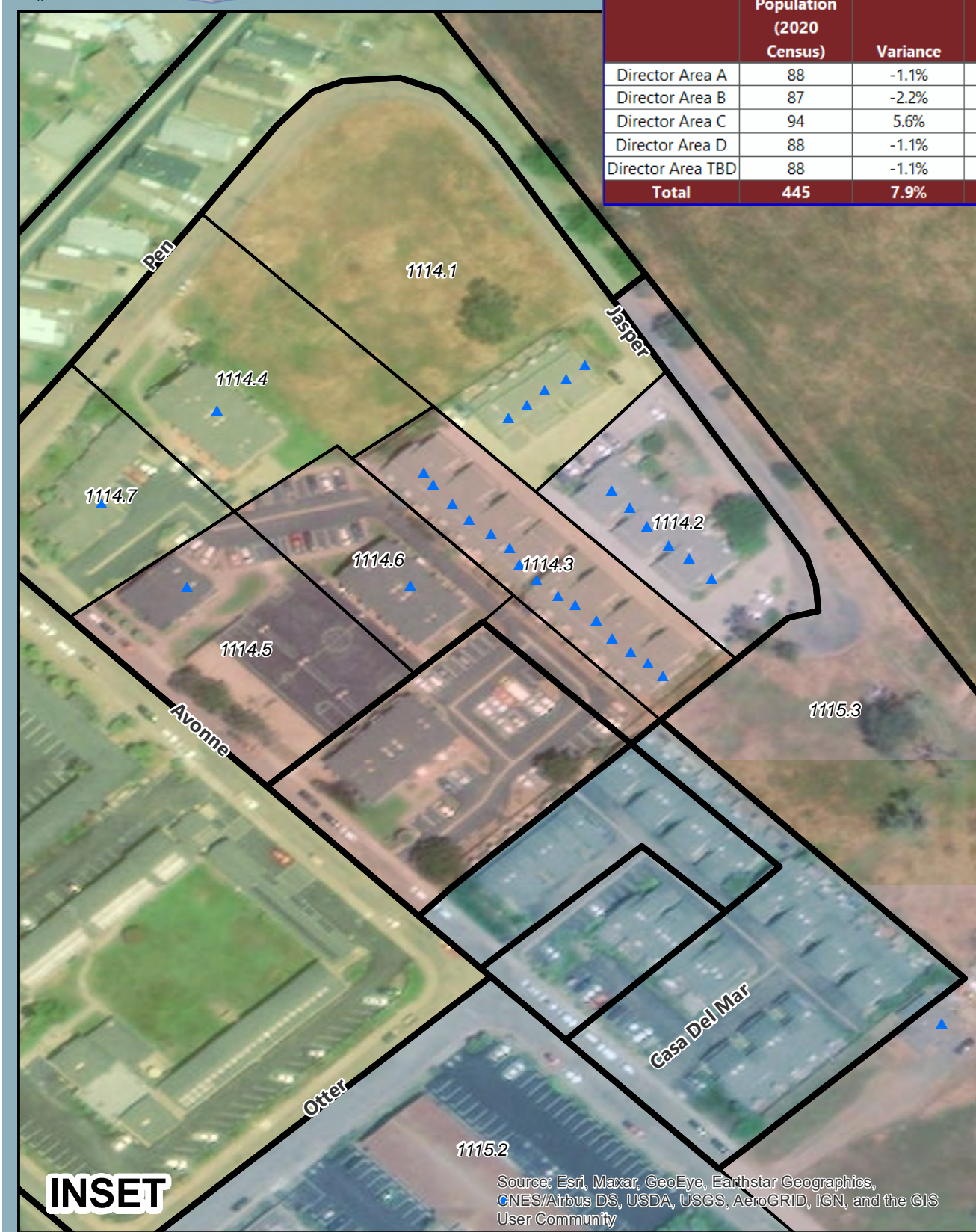
# SAN SIMEON COMMUNITY SERVICES DISTRICT

PROPOSED SCENARIO 1



	Total Population (2020 Census)	Variance	Population Age 18 and Over (2020 Census)	Citizen Voting Age Population (2015-2019 Estimate)
Director Area A	88	-1.1%	64	45
Director Area B	87	-2.2%	77	55
Director Area C	94	5.6%	61	34
Director Area D	88	-1.1%	72	49
Director Area TBD	88	-1.1%	65	37
<b>Total</b>	<b>445</b>	<b>7.9%</b>	<b>339</b>	<b>220</b>

★ Directors  
▲ Water Service Addresses  
**Scenario 1**  
 Director Area "A"  
 Director Area "B"  
 Director Area "C"  
 Director Area "D"  
 Director Area TBD



**INSET**

Source: Esri, Maxar, GeoEye, Earthstar Geographics, CNES/Airbus DS, USDA, USGS, AeroGRID, IGN, and the GIS User Community



Source: Esri, Maxar, GeoEye, Earthstar Geographics, CNES/Airbus DS, USDA, USGS, AeroGRID, IGN, and the GIS User Community



**SAN SIMEON CSD**

CONCEPTUAL DIRECTOR AREAS - SCENARIO 1

<b>Total Population:</b>	<b>445</b>	<b>Ideal Population:</b>	<b>89</b>	<b>Variance:</b>	<b>7.9%</b>
--------------------------	------------	--------------------------	-----------	------------------	-------------

<b>Total Population (2020 Census)</b>					
	<b>Director Area A</b>	<b>Director Area B</b>	<b>Director Area C</b>	<b>Director Area D</b>	<b>Director Area TBD</b>
Population	88	87	94	88	88
Population Variance	-1	-2	5	-1	-1
	-1.1%	-2.2%	5.6%	-1.1%	-1.1%
Hispanic/Latino	64.8%	42.5%	85.1%	68.2%	75.0%
White	27.3%	55.2%	9.6%	26.1%	22.7%
Black/ African American	0.0%	0.0%	0.0%	0.0%	0.0%
American Indian/ Alaska Native	0.0%	0.0%	1.1%	0.0%	0.0%
Asian	4.5%	1.1%	1.1%	3.4%	0.0%
Native Hawaiian/ Other Pacific Islander	0.0%	0.0%	0.0%	0.0%	0.0%
Other	0.0%	0.0%	0.0%	0.0%	0.0%
Two or More Races	3.4%	1.1%	3.2%	2.3%	2.3%

<b>Population 18 and Over (2020 Census)</b>					
	<b>Director Area 1</b>	<b>Director Area 2</b>	<b>Director Area 3</b>	<b>Director Area 4</b>	<b>Director Area 5</b>
Population	64	77	61	72	65
Hispanic/Latino	56.3%	35.1%	77.0%	62.5%	72.3%
White	32.8%	62.3%	14.8%	30.6%	27.7%
Black/ African American	0.0%	0.0%	0.0%	0.0%	0.0%
American Indian/ Alaska Native	0.0%	0.0%	1.6%	0.0%	0.0%
Asian	6.3%	1.3%	1.6%	4.2%	0.0%
Native Hawaiian/ Other Pacific Islander	0.0%	0.0%	0.0%	0.0%	0.0%
Other	0.0%	0.0%	0.0%	0.0%	0.0%
Two or More Races	4.7%	1.3%	4.9%	2.8%	0.0%

<b>Citizens by Voting Age Population Estimate (2015-2019)</b>					
	<b>Director Area A</b>	<b>Director Area B</b>	<b>Director Area C</b>	<b>Director Area D</b>	<b>Director Area TBD</b>
Population	45	55	34	49	37
Hispanic/Latino	37.8%	25.5%	64.7%	49.0%	64.9%
White	40.0%	70.9%	26.5%	38.8%	35.1%
Black/ African American	0.0%	0.0%	0.0%	0.0%	0.0%
American Indian/ Alaska Native	0.0%	0.0%	0.0%	0.0%	0.0%
Asian	22.2%	3.6%	8.8%	12.2%	0.0%
Other	0.0%	0.0%	0.0%	0.0%	0.0%
Two or More Races	0.0%	0.0%	0.0%	0.0%	0.0%