

SAN SIMEON COMMUNITY SERVICES DISTRICT

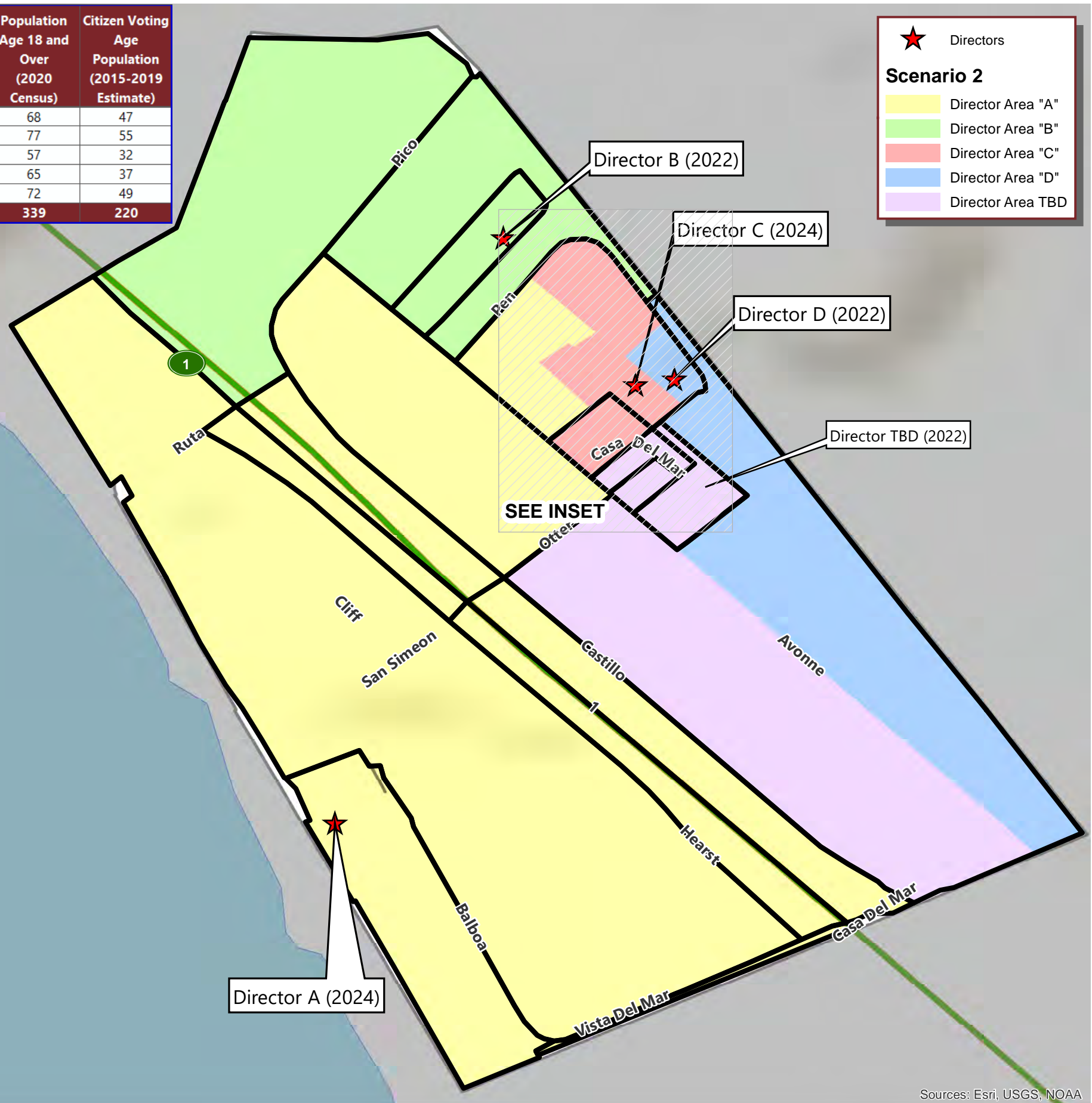
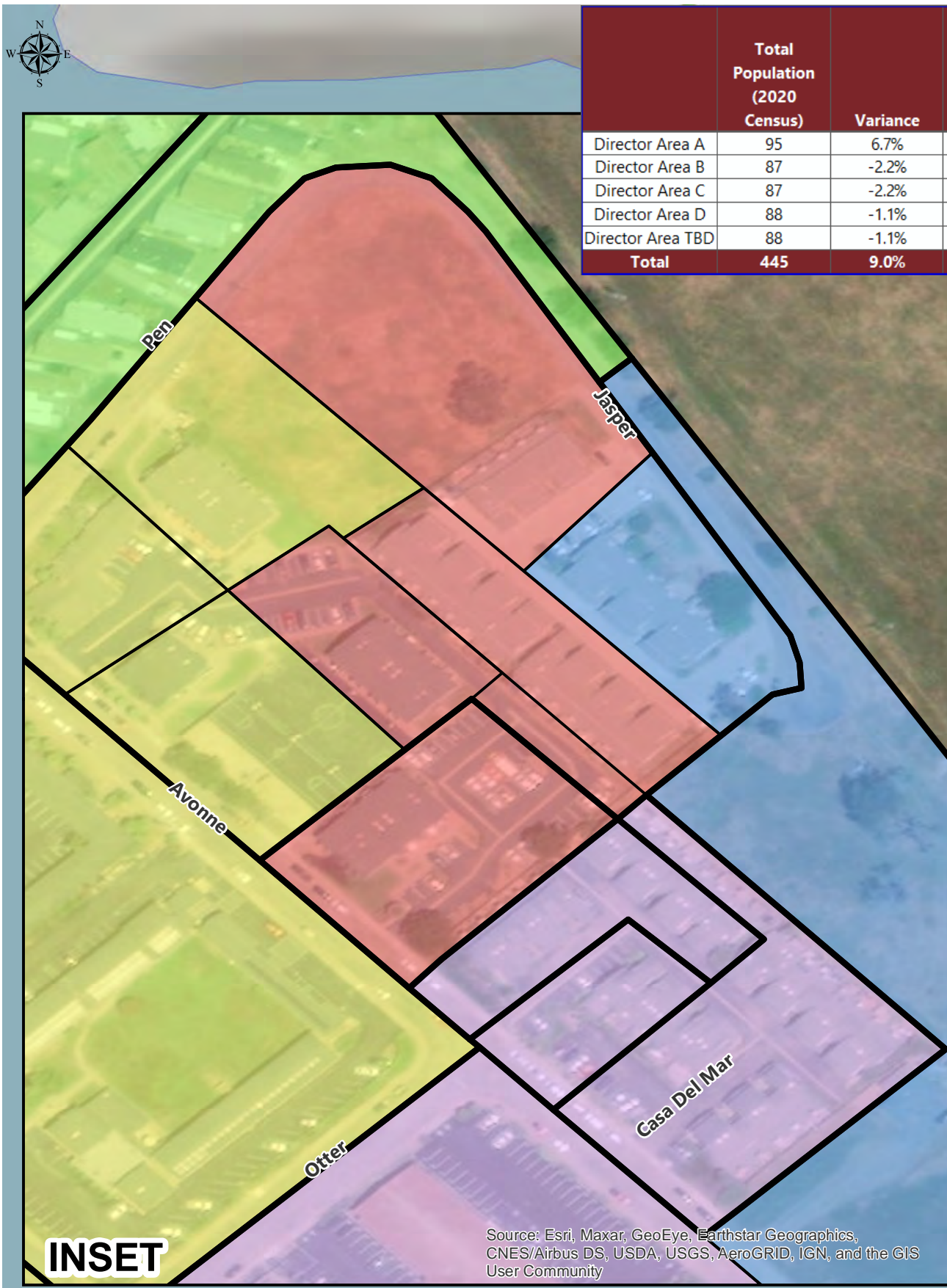
PROPOSED SCENARIO 2

	Total Population (2020 Census)	Variance	Population Age 18 and Over (2020 Census)	Citizen Voting Age Population (2015-2019 Estimate)
Director Area A	95	6.7%	68	47
Director Area B	87	-2.2%	77	55
Director Area C	87	-2.2%	57	32
Director Area D	88	-1.1%	65	37
Director Area TBD	88	-1.1%	72	49
Total	445	9.0%	339	220

★ Directors

Scenario 2

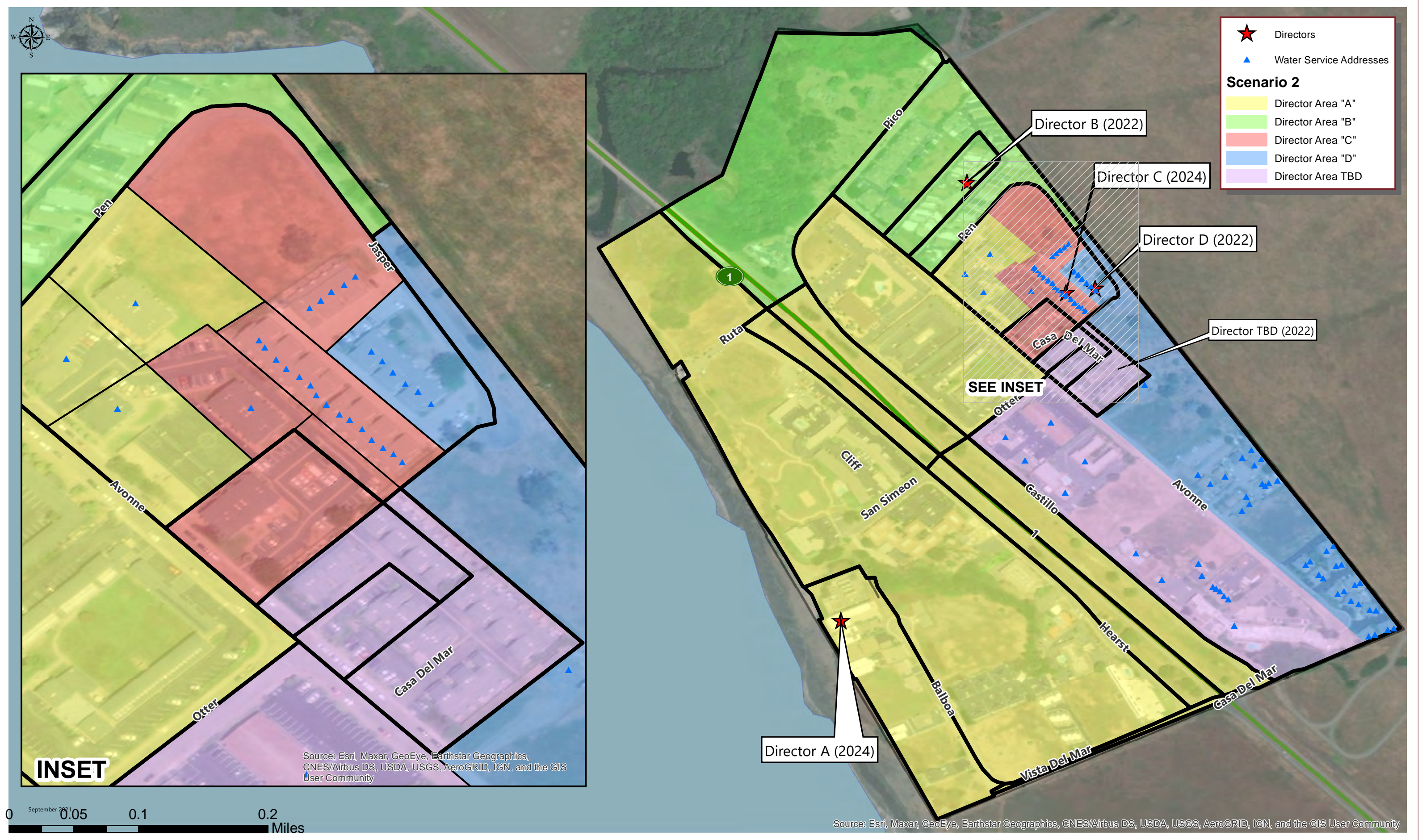
- Director Area "A"
- Director Area "B"
- Director Area "C"
- Director Area "D"
- Director Area TBD



Source: Esri, Maxar, GeoEye, Earthstar Geographics, CNES/Airbus DS, USDA, USGS, AeroGRID, IGN, and the GIS User Community



Sources: Esri, USGS, NOAA



★ Directors
▲ Water Service Addresses
Scenario 2
 Director Area "A"
 Director Area "B"
 Director Area "C"
 Director Area "D"
 Director Area TBD

INSET

Source: Esri, Maxar, GeoEye, Earthstar Geographics, CNES/Airbus DS, USDA, USGS, AeroGRID, IGN, and the GIS User Community

0 0.05 0.1 0.2 Miles

Director A (2024)

Director B (2022)

Director C (2024)

Director D (2022)

Director TBD (2022)

SEE INSET

SAN SIMEON CSD

CONCEPTUAL DIRECTOR AREAS - SCENARIO 2

Total Population:	445	Ideal Population:	89	Variance:	9.0%
--------------------------	------------	--------------------------	-----------	------------------	-------------

Total Population (2020 Census)					
	Director Area A	Director Area B	Director Area C	Director Area D	Director Area TBD
Population	95	87	87	88	88
Population Variance	6	-2	-2	-1	-1
	6.7%	-2.2%	-2.2%	-1.1%	-1.1%
Hispanic/Latino	66.3%	42.5%	85.1%	75.0%	68.2%
White	26.3%	55.2%	9.2%	22.7%	26.1%
Black/ African American	0.0%	0.0%	0.0%	0.0%	0.0%
American Indian/ Alaska Native	0.0%	0.0%	1.1%	0.0%	0.0%
Asian	4.2%	1.1%	1.1%	0.0%	3.4%
Native Hawaiian/ Other Pacific Islander	0.0%	0.0%	0.0%	0.0%	0.0%
Other	0.0%	0.0%	0.0%	0.0%	0.0%
Two or More Races	3.2%	1.1%	3.4%	2.3%	2.3%

Population 18 and Over (2020 Census)					
	Director Area A	Director Area B	Director Area C	Director Area D	Director Area TBD
Population	68	77	57	65	72
Hispanic/Latino	57.4%	35.1%	77.2%	72.3%	62.5%
White	32.4%	62.3%	14.0%	27.7%	30.6%
Black/ African American	0.0%	0.0%	0.0%	0.0%	0.0%
American Indian/ Alaska Native	0.0%	0.0%	1.8%	0.0%	0.0%
Asian	5.9%	1.3%	1.8%	0.0%	4.2%
Native Hawaiian/ Other Pacific Islander	0.0%	0.0%	0.0%	0.0%	0.0%
Other	0.0%	0.0%	0.0%	0.0%	0.0%
Two or More Races	4.4%	1.3%	5.3%	0.0%	2.8%

Citizens by Voting Age Population Estimate (2015-2019)					
	Director Area A	Director Area B	Director Area C	Director Area D	Director Area TBD
Population	47	55	32	37	49
Hispanic/Latino	36.2%	25.5%	68.8%	64.9%	49.0%
White	40.4%	70.9%	25.0%	35.1%	38.8%
Black/ African American	0.0%	0.0%	0.0%	0.0%	0.0%
American Indian/ Alaska Native	0.0%	0.0%	0.0%	0.0%	0.0%
Asian	23.4%	3.6%	6.3%	0.0%	12.2%
Native Hawaiian/ Other Pacific Islander	0.0%	0.0%	0.0%	0.0%	0.0%
Other	0.0%	0.0%	0.0%	0.0%	0.0%
Two or More Races	0.0%	0.0%	0.0%	0.0%	0.0%