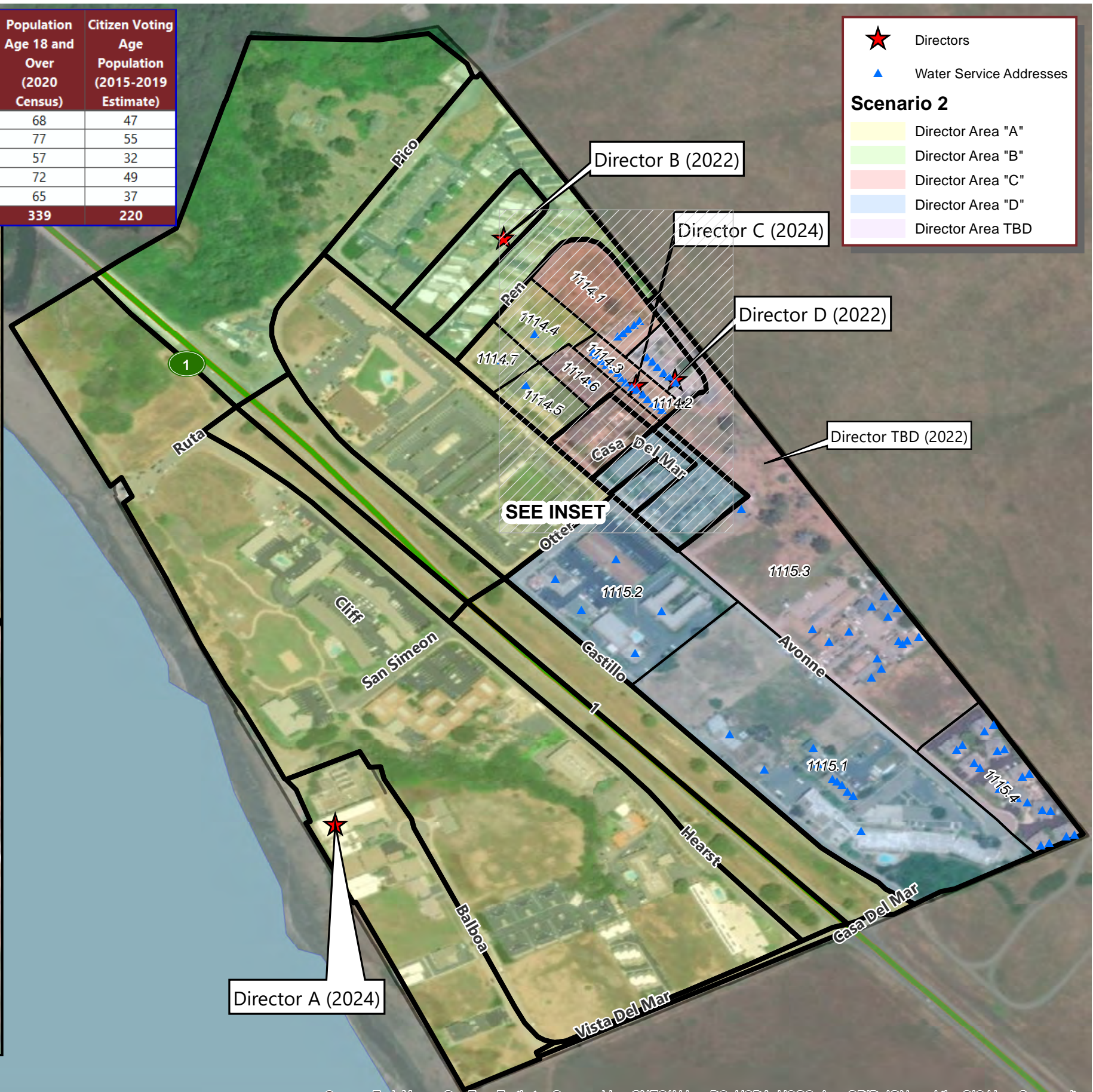
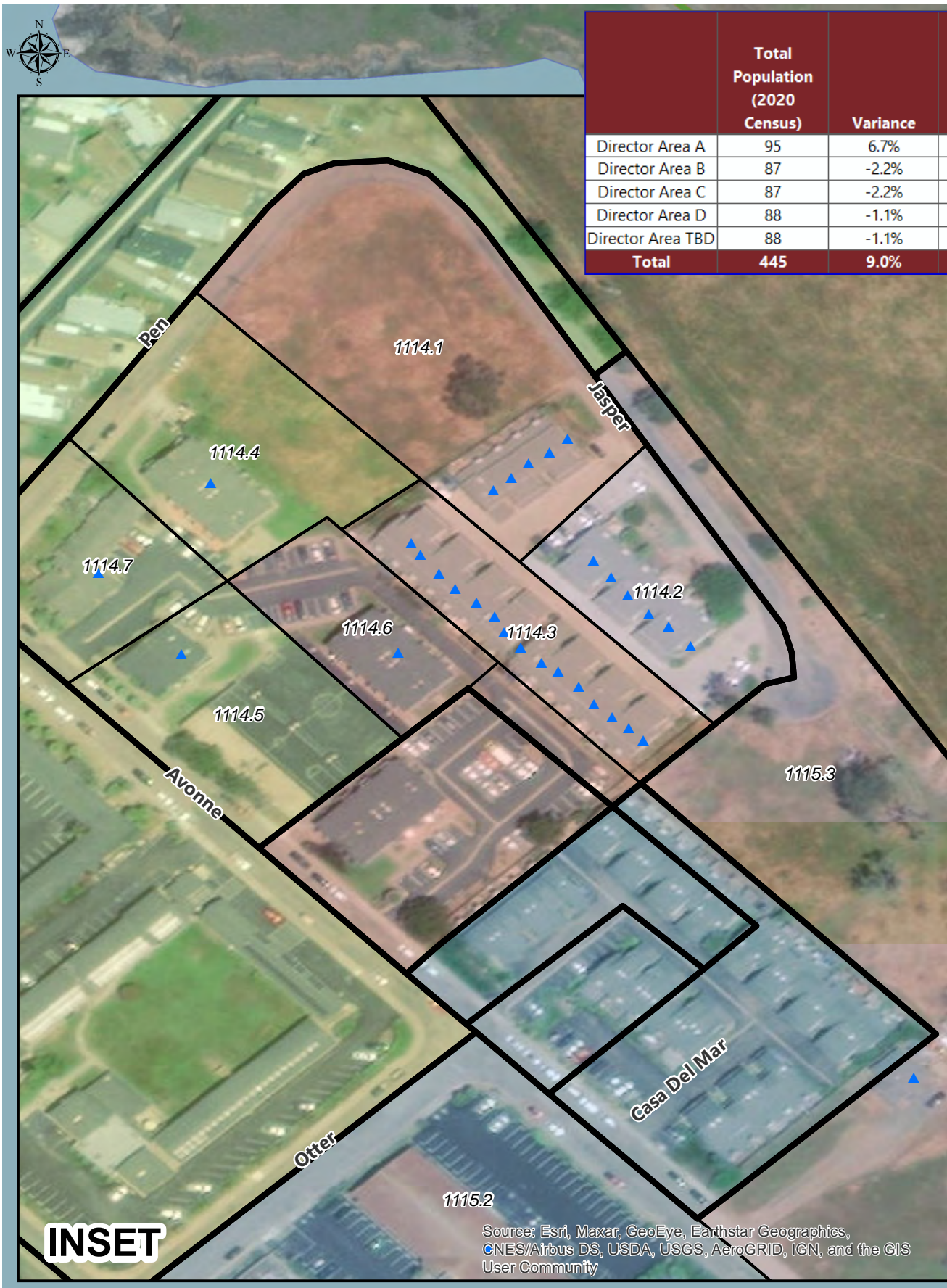


SAN SIMEON COMMUNITY SERVICES DISTRICT

PROPOSED SCENARIO 2

| | Total Population (2020 Census) | Variance | Population Age 18 and Over (2020 Census) | Citizen Voting Age Population (2015-2019 Estimate) |
|-------------------|--------------------------------|-------------|--|--|
| Director Area A | 95 | 6.7% | 68 | 47 |
| Director Area B | 87 | -2.2% | 77 | 55 |
| Director Area C | 87 | -2.2% | 57 | 32 |
| Director Area D | 88 | -1.1% | 72 | 49 |
| Director Area TBD | 88 | -1.1% | 65 | 37 |
| Total | 445 | 9.0% | 339 | 220 |



★ Directors
▲ Water Service Addresses
Scenario 2
 Director Area "A"
 Director Area "B"
 Director Area "C"
 Director Area "D"
 Director Area TBD

0 0.05 0.1 0.2 Miles

Source: Esri, Maxar, GeoEye, Earthstar Geographics, CNES/Airbus DS, USDA, USGS, AeroGRID, IGN, and the GIS User Community

Source: Esri, Maxar, GeoEye, Earthstar Geographics, CNES/Airbus DS, USDA, USGS, AeroGRID, IGN, and the GIS User Community

SAN SIMEON CSD

CONCEPTUAL DIRECTOR AREAS - SCENARIO 2

| | | | | | |
|--------------------------|------------|--------------------------|-----------|------------------|-------------|
| Total Population: | 445 | Ideal Population: | 89 | Variance: | 9.0% |
|--------------------------|------------|--------------------------|-----------|------------------|-------------|

| Total Population (2020 Census) | | | | | |
|--|------------------------|------------------------|------------------------|------------------------|--------------------------|
| | Director Area A | Director Area B | Director Area C | Director Area D | Director Area TBD |
| Population | 95 | 87 | 87 | 88 | 88 |
| Population Variance | 6 | -2 | -2 | -1 | -1 |
| | 6.7% | -2.2% | -2.2% | -1.1% | -1.1% |
| Hispanic/Latino | 66.3% | 42.5% | 85.1% | 68.2% | 75.0% |
| White | 26.3% | 55.2% | 9.2% | 26.1% | 22.7% |
| Black/ African American | 0.0% | 0.0% | 0.0% | 0.0% | 0.0% |
| American Indian/ Alaska Native | 0.0% | 0.0% | 1.1% | 0.0% | 0.0% |
| Asian | 4.2% | 1.1% | 1.1% | 3.4% | 0.0% |
| Native Hawaiian/ Other Pacific Islander | 0.0% | 0.0% | 0.0% | 0.0% | 0.0% |
| Other | 0.0% | 0.0% | 0.0% | 0.0% | 0.0% |
| Two or More Races | 3.2% | 1.1% | 3.4% | 2.3% | 2.3% |

| Population 18 and Over (2020 Census) | | | | | |
|---|------------------------|------------------------|------------------------|------------------------|--------------------------|
| | Director Area A | Director Area B | Director Area C | Director Area D | Director Area TBD |
| Population | 68 | 77 | 57 | 72 | 65 |
| Hispanic/Latino | 57.4% | 35.1% | 77.2% | 62.5% | 72.3% |
| White | 32.4% | 62.3% | 14.0% | 30.6% | 27.7% |
| Black/ African American | 0.0% | 0.0% | 0.0% | 0.0% | 0.0% |
| American Indian/ Alaska Native | 0.0% | 0.0% | 1.8% | 0.0% | 0.0% |
| Asian | 5.9% | 1.3% | 1.8% | 4.2% | 0.0% |
| Native Hawaiian/ Other Pacific Islander | 0.0% | 0.0% | 0.0% | 0.0% | 0.0% |
| Other | 0.0% | 0.0% | 0.0% | 0.0% | 0.0% |
| Two or More Races | 4.4% | 1.3% | 5.3% | 2.8% | 0.0% |

| Citizens by Voting Age Population Estimate (2015-2019) | | | | | |
|---|------------------------|------------------------|------------------------|------------------------|--------------------------|
| | Director Area A | Director Area B | Director Area C | Director Area D | Director Area TBD |
| Population | 47 | 55 | 32 | 49 | 37 |
| Hispanic/Latino | 36.2% | 25.5% | 68.8% | 49.0% | 64.9% |
| White | 40.4% | 70.9% | 25.0% | 38.8% | 35.1% |
| Black/ African American | 0.0% | 0.0% | 0.0% | 0.0% | 0.0% |
| American Indian/ Alaska Native | 0.0% | 0.0% | 0.0% | 0.0% | 0.0% |
| Asian | 23.4% | 3.6% | 6.3% | 12.2% | 0.0% |
| Native Hawaiian/ Other Pacific Islander | 0.0% | 0.0% | 0.0% | 0.0% | 0.0% |
| Other | 0.0% | 0.0% | 0.0% | 0.0% | 0.0% |
| Two or More Races | 0.0% | 0.0% | 0.0% | 0.0% | 0.0% |