

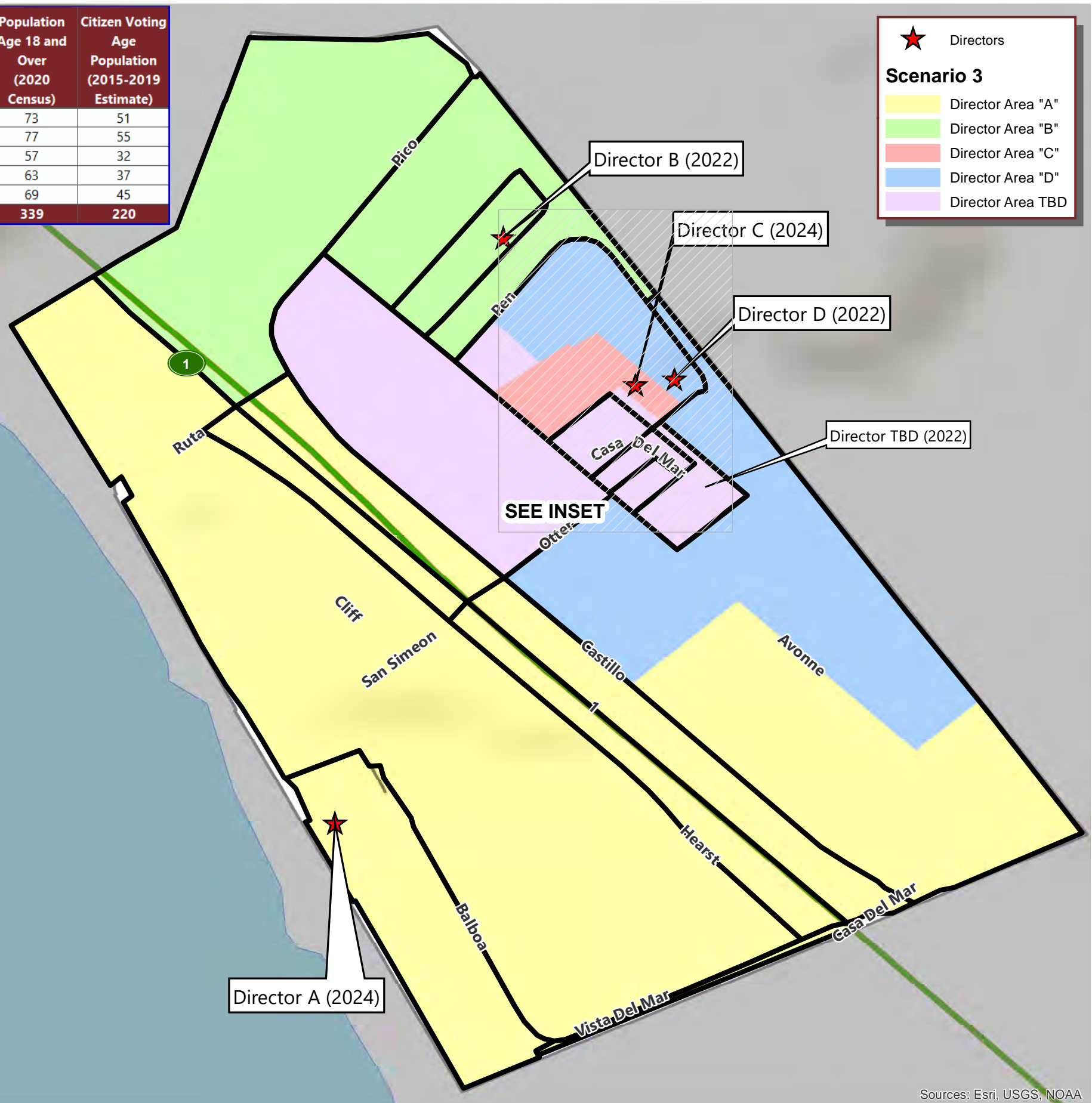
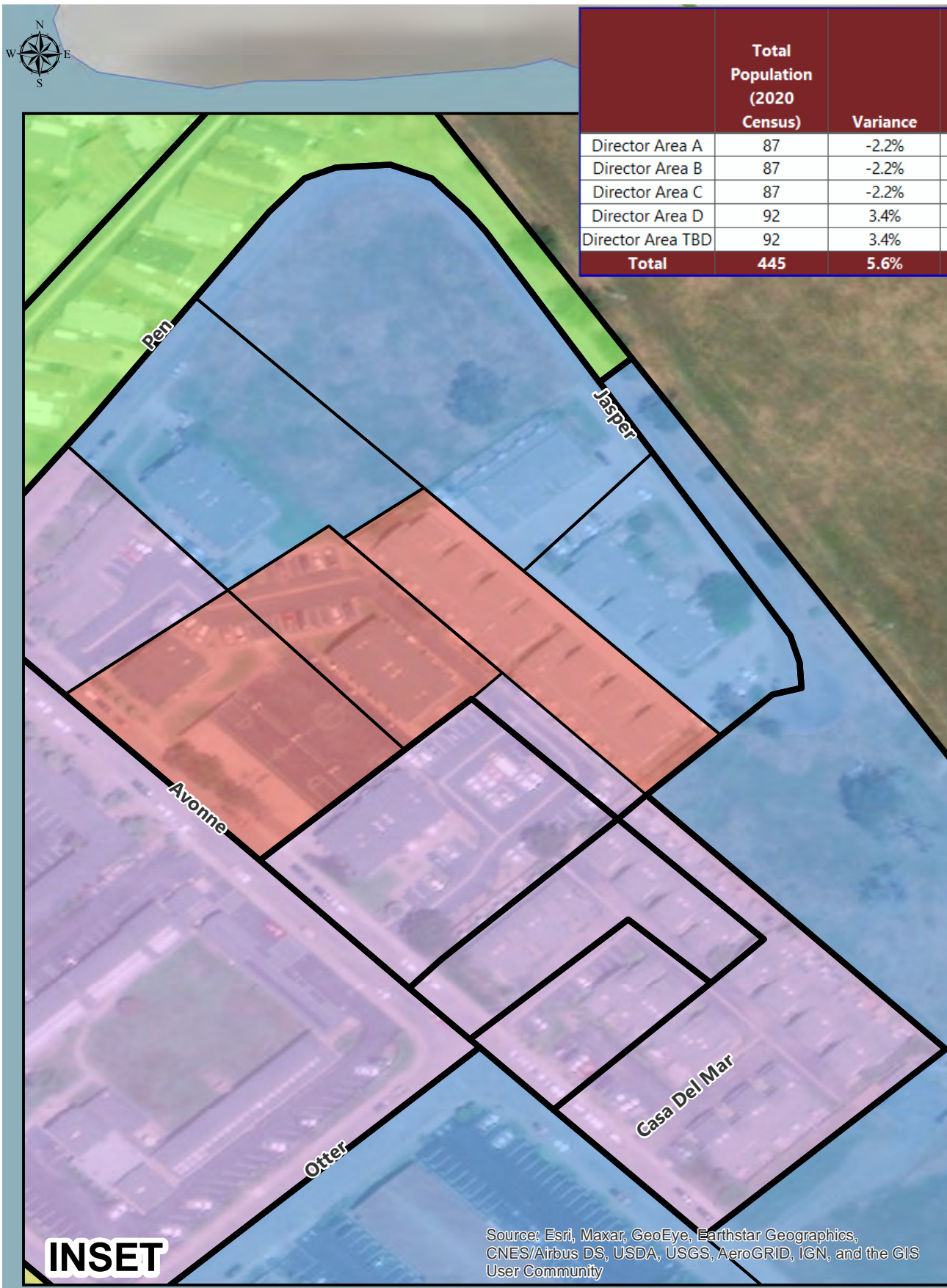
# SAN SIMEON COMMUNITY SERVICES DISTRICT

	Total Population (2020 Census)	Variance	Population Age 18 and Over (2020 Census)	Citizen Voting Age Population (2015-2019 Estimate)
Director Area A	87	-2.2%	73	51
Director Area B	87	-2.2%	77	55
Director Area C	87	-2.2%	57	32
Director Area D	92	3.4%	63	37
Director Area TBD	92	3.4%	69	45
<b>Total</b>	<b>445</b>	<b>5.6%</b>	<b>339</b>	<b>220</b>

★ Directors

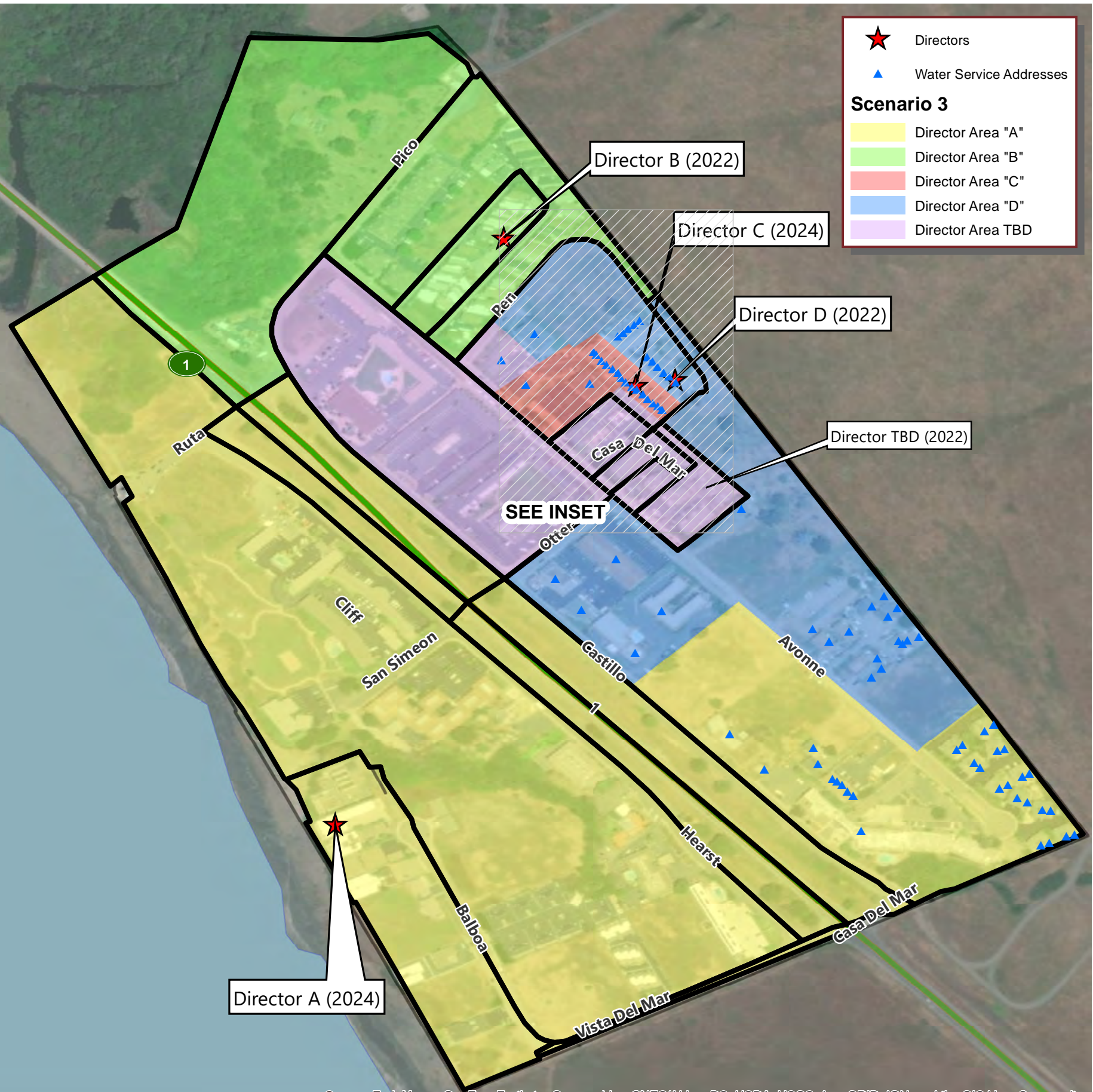
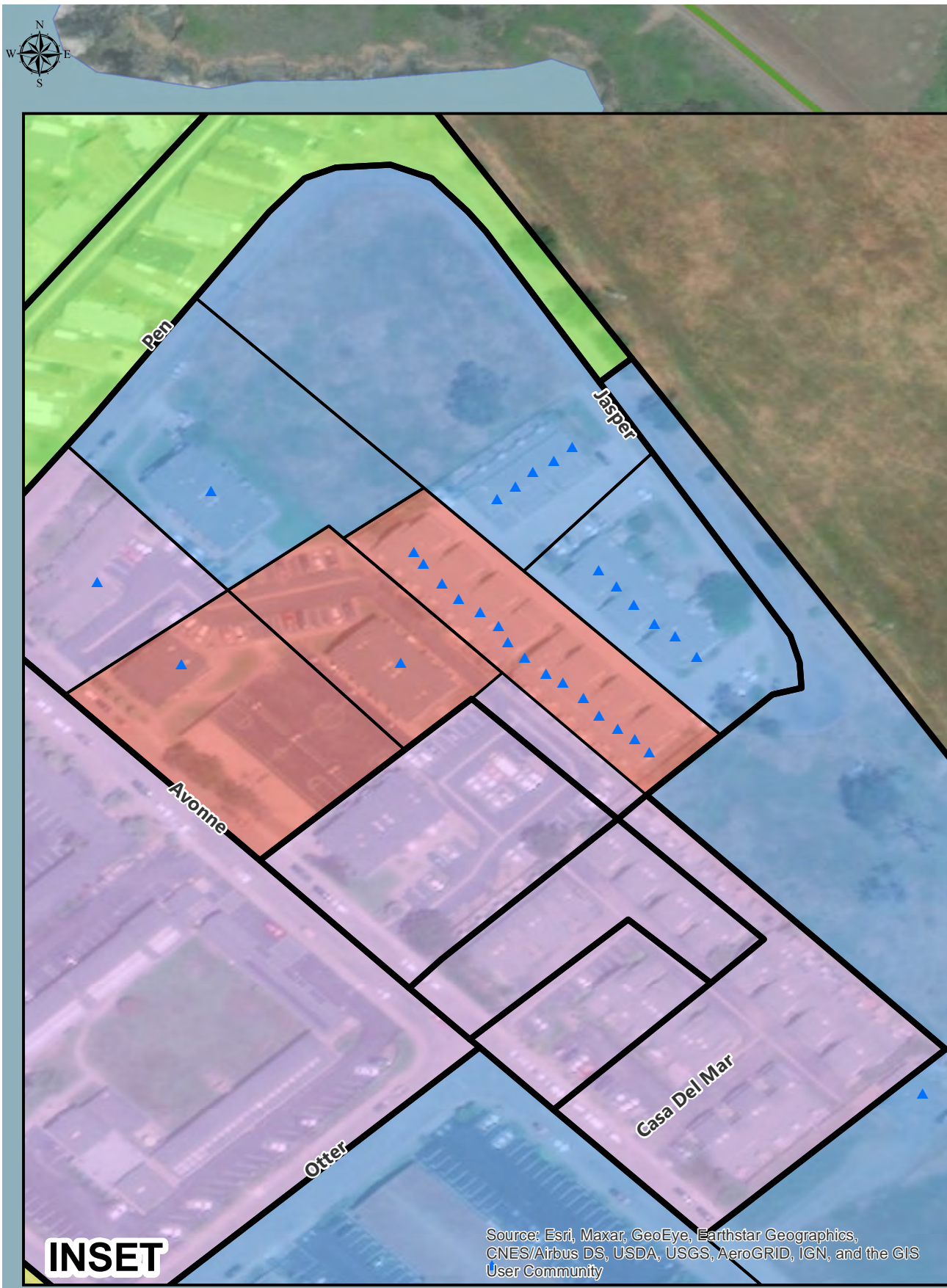
**Scenario 3**

- Director Area "A"
- Director Area "B"
- Director Area "C"
- Director Area "D"
- Director Area TBD



Source: Esri, Maxar, GeoEye, Earthstar Geographics, CNES/Airbus DS, USDA, USGS, AeroGRID, IGN, and the GIS User Community

Sources: Esri, USGS, NOAA



Source: Esri, Maxar, GeoEye, Earthstar Geographics, CNES/Airbus DS, USDA, USGS, AeroGRID, IGN, and the GIS User Community

**SAN SIMEON CSD**

CONCEPTUAL DIRECTOR AREAS - SCENARIO 3

<b>Total Population:</b>	<b>445</b>	<b>Ideal Population:</b>	<b>89</b>	<b>Variance:</b>	<b>5.6%</b>
--------------------------	------------	--------------------------	-----------	------------------	-------------

<b>Total Population (2020 Census)</b>					
	<b>Director Area A</b>	<b>Director Area B</b>	<b>Director Area C</b>	<b>Director Area D</b>	<b>Director Area TBD</b>
Population	87	87	87	92	92
Population Variance	-2	-2	-2	3	3
	-2.2%	-2.2%	-2.2%	3.4%	3.4%
Hispanic/Latino	55.2%	42.5%	87.4%	82.6%	68.5%
White	35.6%	55.2%	9.2%	16.3%	23.9%
Black/ African American	0.0%	0.0%	0.0%	0.0%	0.0%
American Indian/ Alaska Native	0.0%	0.0%	1.1%	0.0%	0.0%
Asian	4.6%	1.1%	1.1%	0.0%	3.3%
Native Hawaiian/ Other Pacific Islander	0.0%	0.0%	0.0%	0.0%	0.0%
Other	0.0%	0.0%	0.0%	0.0%	0.0%
Two or More Races	4.6%	1.1%	1.1%	1.1%	4.3%

<b>Population 18 and Over (2020 Census)</b>					
	<b>Director Area A</b>	<b>Director Area B</b>	<b>Director Area C</b>	<b>Director Area D</b>	<b>Director Area TBD</b>
Population	73	77	57	63	69
Hispanic/Latino	50.7%	35.1%	80.7%	77.8%	62.3%
White	39.7%	62.3%	14.0%	22.2%	27.5%
Black/ African American	0.0%	0.0%	0.0%	0.0%	0.0%
American Indian/ Alaska Native	0.0%	0.0%	1.8%	0.0%	0.0%
Asian	5.5%	1.3%	1.8%	0.0%	4.3%
Native Hawaiian/ Other Pacific Islander	0.0%	0.0%	0.0%	0.0%	0.0%
Other	0.0%	0.0%	0.0%	0.0%	0.0%
Two or More Races	4.1%	1.3%	1.8%	0.0%	5.8%

<b>Citizens by Voting Age Population Estimate (2015-2019)</b>					
	<b>Director Area A</b>	<b>Director Area B</b>	<b>Director Area C</b>	<b>Director Area D</b>	<b>Director Area TBD</b>
Population	51	55	32	37	45
Hispanic/Latino	37.3%	25.5%	65.6%	67.6%	48.9%
White	47.1%	70.9%	25.0%	29.7%	35.6%
Black/ African American	0.0%	0.0%	0.0%	0.0%	0.0%
American Indian/ Alaska Native	0.0%	0.0%	0.0%	0.0%	0.0%
Asian	15.7%	3.6%	9.4%	2.7%	15.6%
Native Hawaiian/ Other Pacific Islander	0.0%	0.0%	0.0%	0.0%	0.0%
Other	0.0%	0.0%	0.0%	0.0%	0.0%
Two or More Races	0.0%	0.0%	0.0%	0.0%	0.0%